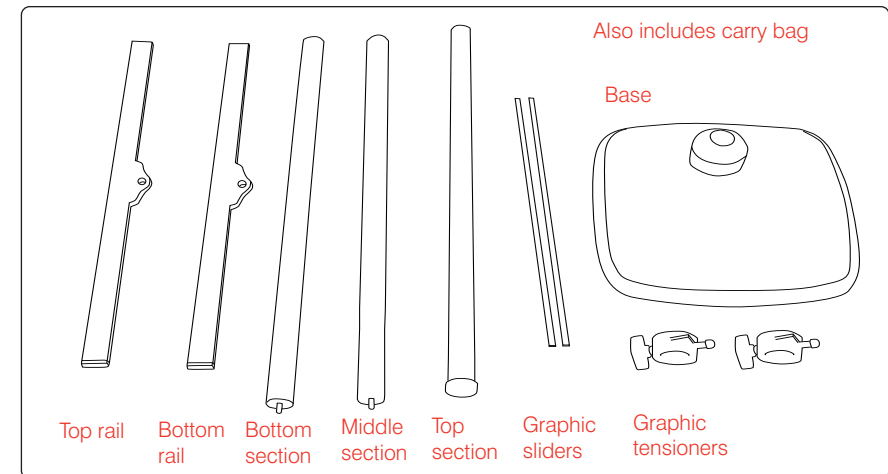


Tension banner



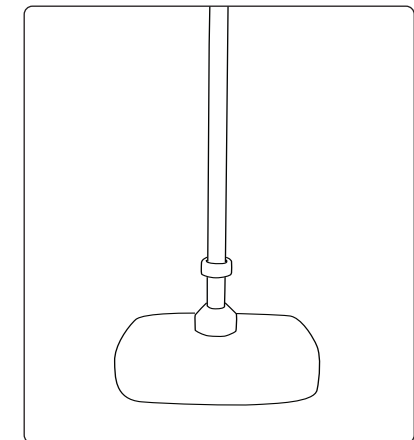
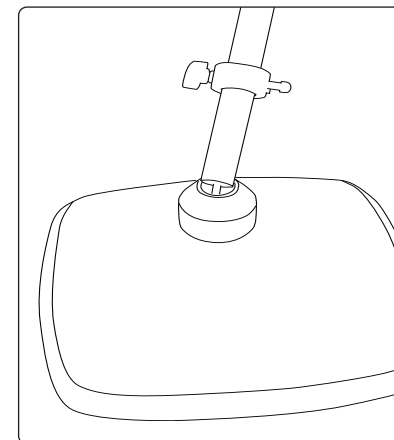
Hardware specifications

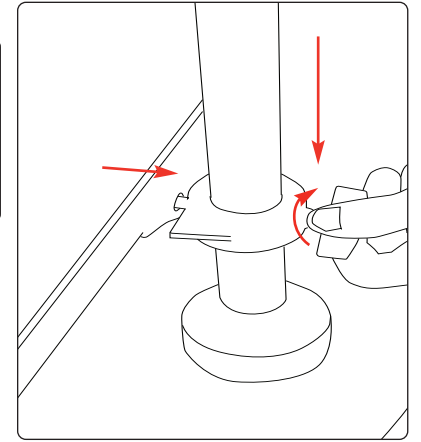
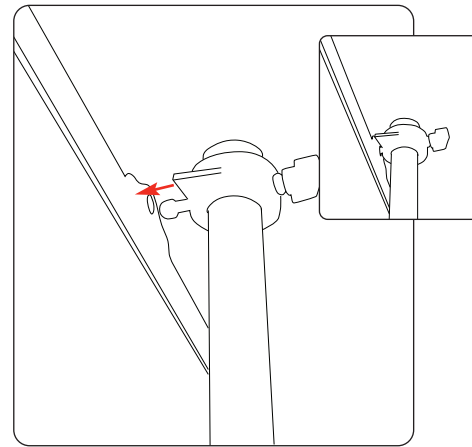
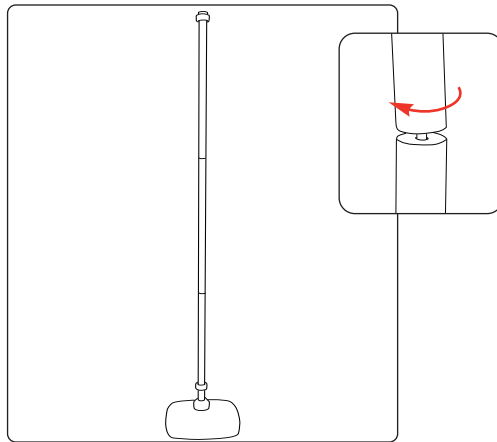
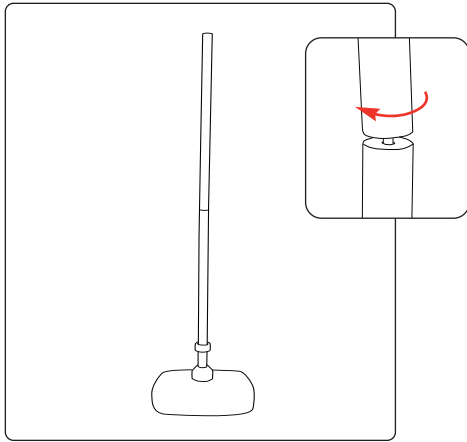
Assembled dimensions 2010mm (h) x 610mm (w) x 330mm (d) (mm)

weight 3.4kg

Graphic specifications

Graphic Area: 1800(h) x 600 (w) (mm)





Attaching graphic

When attaching graphic slider make sure the slider is attached to the front of the graphic

