

Eco Banna (800 & 1000)



A highly portable, versatile and cost effective banner stand that is lightweight, very stable and simple to use.

features & benefits

- Quick to assemble and easy to use
- Lightweight aluminium components
- Snap frame rails enable easy graphic changes
- Bungee pole provides consistant graphic height
- Includes carry bag



graphic dimensions



graphic dimensions



Literature holder accessory when attached to banner

hardware specifications	graphic specifications	additional info
Hardware Dimensions (mm) 2070 (h) x 805 (w) x 510 (d) Weight: 2.75kg approx (including carry bag)	Visible Graphic Dimensions (mm): 1985 (h) x 800 (w) Actual Graphic Dimensions (mm): 2000 (h) x 800 (w) Substrate: Between 225 & 300 microns	Included in kit: Carry bag, top rail, bottom rail / stabilising foot and bungee pole Availability: Anodised silver

020 8664 5660

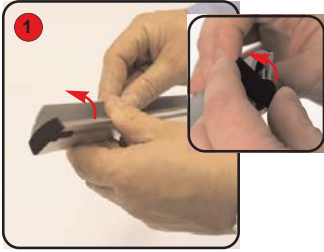
www.discountdisplays.co.uk
31-35 Wortley Road, Croydon, Surrey, CR0 3EB

sales@discountdisplays.co.uk

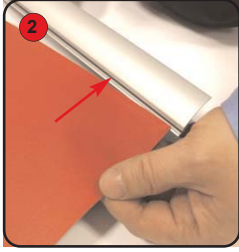
Eco Banna (800 & 1000)



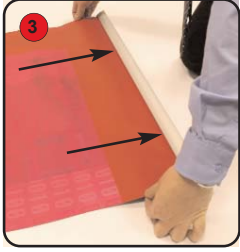
Kit includes: carry bag, top rail, bottom rail / stabilising foot and bungee pole



Open up the hinged edge on the top rail and twist the end cap to open the rail and insert the graphic.



Slide the graphic between the hinged edge and the rail through the narrow opening. Snap shut to secure.



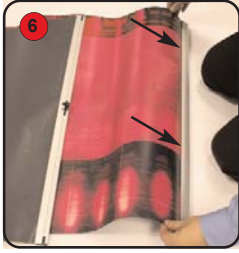
Ensure the graphic is pushed securely in all the way along the rail.



Open up the stabilising foot on the bottom rail.



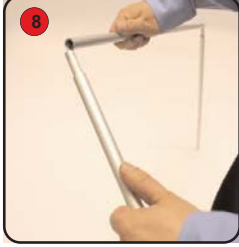
Open up the hinged edge on the bottom rail and twist the end cap to open the rail and insert the graphic



Insert the bottom of the graphic into the bottom rail, sliding it through the narrow opening.



When the graphic is inserted, snap shut the hinged edge to secure the fit.



Open up the bungee pole and connect the 3 parts together.



Slot bottom of the bungee pole onto the foot.



Finally, bend the bungee pole forward slightly and fit to the top rail.

020 8664 5660

www.discountdisplays.co.uk
31-35 Wortley Road, Croydon, Surrey, CR0 3EB

sales@discountdisplays.co.uk