



Reflecta Lite is a freestanding double sided light box. Elegant looks and ease of assembly make the Reflecta Lite ideal for retail or display applications.

features & benefits

- Internally illuminated light box
- Double sided
- Freestanding
- Simple to assemble and change graphics
- Stable oversize base
- Packs flat for transit and storage
- Available in silver

technical information

- 58w Fluorescent daylight tube
- 2 metre approx. mains lead & plug
- Recommended graphic material:
200 micron Duratrans or equivalent
- Suitable for indoor use only



hardware specifications	graphic specifications	additional info
Assembled Dimensions (mm): 1565 (h) x 565 (w) x 280 (d) approx. Weight: 9kg approx. <i>Weight does not include graphics or transit packaging.</i>	Graphic Dimensions (mm): 1540 (h) x 334 (w) approx. Visible Graphic Dimensions (mm): 1530 (h) x 318 (w) approx. Recommended graphic material: 200 micron Duratrans or equivalent.	Availability: Silver Carry bag is not included

Assembly Instructions



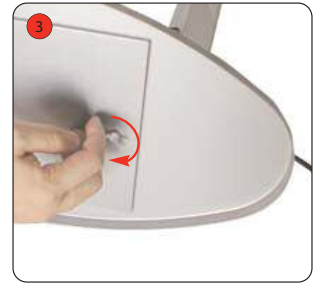
Kit includes: Base, bolt & wing nut x2, light box frame, fluorescent tube, white backing sheets x2, clear sheets x2 & lid.



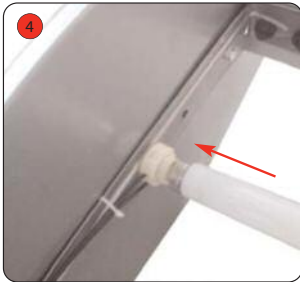
1 Undo the bolt and wing nut. Offer up the light box frame to the base.



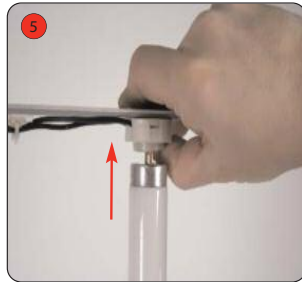
2 Feed the bolt through the hole in the frame and through the corresponding hole in the base.



3 Fasten the bolt and wing nut to secure the base to the light box frame. Repeat steps 1 to 3 for the 2nd bolt and wing nut.



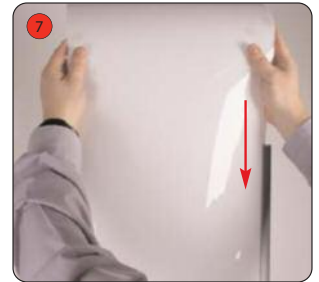
4 Locate the fluorescent tube terminals into the connector cups attached to the frame.



5 Squeeze the connector cup at the top of the frame and locate the fluorescent tube terminals into the cup.



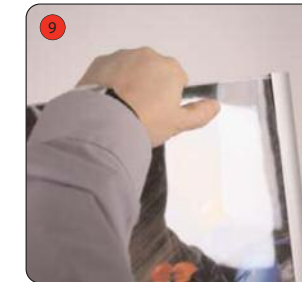
6 Fluorescent tube located into the light box frame.
Do not switch on power until the fluorescent tube is correctly seated into the light box frame.



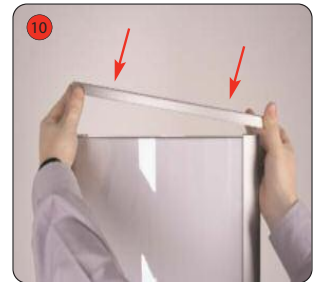
7 Slide the white backing sheet into the channels in the light box frame.



8 Place the graphic image over the white backing sheet.



9 Slide the clear protective sheet over the graphic image. Repeat steps 7 to 9 for the reverse side.



10 Fit the lid over the top of the light box frame to complete assembly.

Other products in our Reflecta range include:



Reflecta D

A high impact light box display solution, just add your own graphics. Spring loaded mechanism for easy change of graphics. Wall fixing, portrait or landscape



Reflecta Pro

An unusual and subtle way of creating an eye catching display. The Reflecta Pro light box provides you with a simple and cost effective solution.