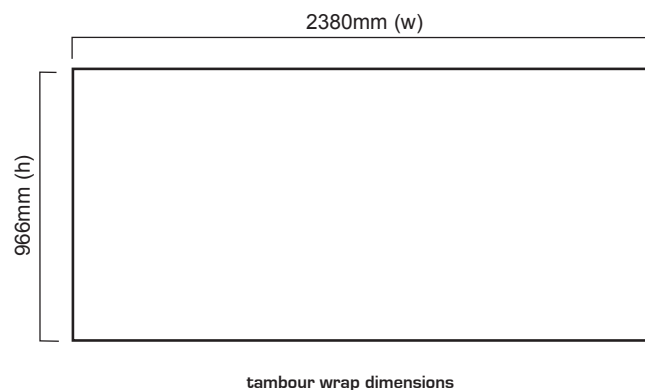




Contemporary yet practical, the Urban physique unit is a useful workstation complete with clear acrylic shelf.

## features & benefits

- Flat pack furniture constructed from composite materials and flexible MDF tambour
- Easy to transport and quick to assemble
- No tools required
- Load bearing up to 75kgs approx
- Useful raised acrylic shelf
- Cable management port
- Internal storage area



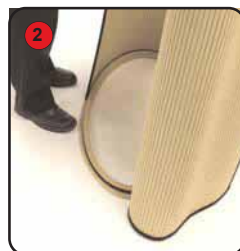
| hardware specifications  | wrap specifications   | additional info  |
|--|---|--|
| <p>Hardware Dimensions [mm]:<br/>1000 [h] x 1000 [w] x 500 [d] approx.<br/>(1080mm [h] to Acrylic shelf)</p> <p>Acrylic shelf Dimensions [mm]:<br/>630 x 425 approx. [at widest points]</p> <p>Weight: 20kg approx.</p> <p>Carry bag/case Dimensions [mm]:<br/>1050 x 550 x 160 approx.<br/>AB112A Carry bag or AC311 Carry case</p> | <p>Base Wrap Dimensions [mm]:<br/>966 [h] x 2380 [w] approx.</p> <p>If applying a graphic to the wrap, an allowance should be made to its size to accommodate material type, thickness etc.</p> | <p>Availability:</p> <p>Choice of fabric wrap colours.<br/>Laminate colours available in black, beech or rosewood.</p> <p>Optional accessories:</p> <p>Carry bags or cases, 50w LV Jack socket lighting, Internal shelving, lockable door, aperture cutouts.</p> |



Kit includes: Acrylic shelf, 80mm standoff (x 3), top, tambour wrap and base



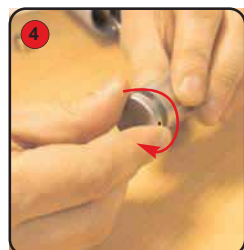
Place the base on the floor with the ridging uppermost. Attach the tambour to the base.



Make sure that the hook fastener on both the tambour and base fit securely together.



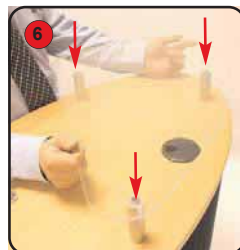
Place the top onto the tambour wrap and secure using hook fastener.



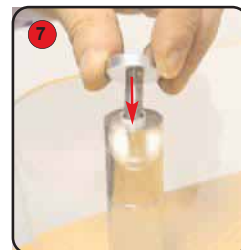
Unfasten and remove the cover from each standoff.



Fasten each standoff to the brass fasteners mounted to the top.



Lower the acrylic shelf over the standoffs.



Secure the acrylic shelf to the standoffs by fastening the stand off covers.

