



OVERVIEW OF THE XP SERIES

1 The XP series has been designed for professional users who require rapid set up and reliable service and can be used on a daily basis



2 The tents are recommended for intensive use and comply with all the relevant safety standards.



3 Full anodized aluminium structure, injected fibre glass connector piece, stainless steel bolts, 380 gr/m² PVC fabric. European safety standard EN 13782, standard CTS according to NV 1965 (snow and wind), M2 fire-resistant fabric according to standard NF P 92503, 5 year guarantee, Wind resistance: +95km/h with adequate anchorage.



4 The advantages:
Intensive use,
5 year guarantee,
European Safety Standards,
Fire-resistant fabric.
Sliding walls with ties
Wind resistance: + 95 km/h
(with anchorage).



European safety standard EN 13782

XP DIMENSIONS AND PACK

XP RANGE SPECIFICATIONS

1



XP220
2x2 m

Tent dimension : 2x2m / Weight : 13 kg / Height of the Peak : 3,15m /
Dimensions when folded : 1,52x0,25x0,25 / Ridge height : Min 1,9m Max 2,05m /
Number of legs : 4 / Number of Peaks : 1 / Surface : 4m² /



XP330
3x3 m

Tent dimension : 3x3m / Weight : 27,5 kg / Height of the Peak : 3,15m /
Dimensions when folded : 1,52x0,31x0,31 / Ridge height : Min 1,9m Max 2,05m /
Number of legs : 4 / Number of Peaks : 1 / Surface : 9m² /



XP345
3x4,5 m

Tent dimension : 3x4,5m / Weight : 38 kg / Height of the Peak : 3,15m /
Dimensions when folded : 1,52x0,31x0,4 / Ridge height : Min 1,9m Max 2,05m /
Number of legs : 4 / Number of Peaks : 2 / Surface : 13,5m² /



XP360
3x6 m

Tent dimension : 3x6m / Weight : 51,5 kg / Height of the Peak : 3,15m /
Dimensions when folded : 1,52x0,31x0,5 / Ridge height : Min 1,9m Max 2,05m /
Number of legs : 6 / Number of Peaks : 2 / Surface : 18m² /

XP FABRICS

2

RAL 9016

RAL 1023

RAL 9011

RAL 1015

RAL Coca Cola

RAL 6005

RAL 5007

RAL 7042

Technical information :
380 gr/m²
Fabric 550 DTEX
Resistance -30° + 70°C
Double side coating
Double side lacquer
Standards EN 15619

This flexible, resistant 380 GR M² PVC fabric, which is M2 fire-resistant in compliance with standard NF P 92503, has a unique design. It is treated for ultra violet protection and a lacquered finish ensures its longevity. Identified LPTENT[®] M2 fabric.



- ultra violet protection - anti mildew - anti rot - anti salt

XP PACK CONTENTS

3

Frame + Top



Bag with retractable wheels



Guying kit



Wall bag (optional walls).





XP FRAME

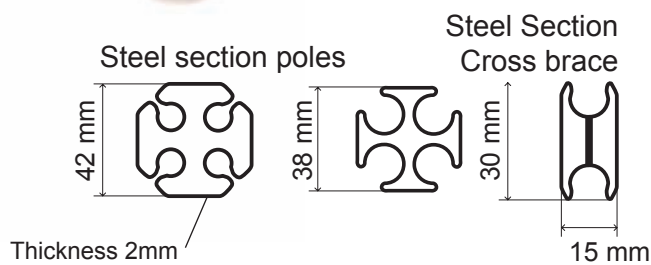
Injected corner lever to facilitate assembly, as well as an aluminium cover for optimum roof tension.



PATENTED ®

100% EN anodized aluminium XP series frame Premium quality 573 6060, injected fibre glass connector piece, stainless steel bolts.

The XP steel sections have grooves which provide extreme resistance to twisting resulting from assembly, bad weather, or the wind.



	ZP	XP	S	ECO
Use	Daily, almost permanent	Daily, semi-permanent	Regular	Occasional
Guarantee	5 years	5 years	2 years	1 year
Accreditation Standard	EN 13782	EN 13782	EN 13782	98/6/CE
Material	Alu/PVC/fibre glass	Alu/PVC/fibre glass	Alu/PVC/fibre glass	metal/nylon PVC
Wind Resistance	100 km/h	+95 km/h anchorage or ballasting comply with regulations	+70 km/h	+50 km/h

Alu Bracket

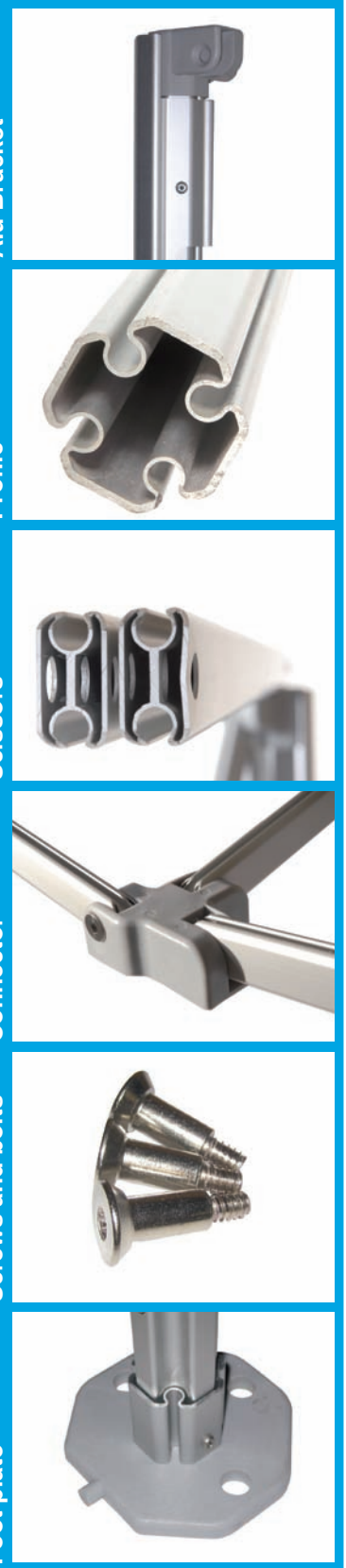
Profile

Scissors

Connector

Screws and bolts

Foot plate



XP ROOF AND WALLS

XP WALL OPTIONS

1

Blank wall

Completely opaque.
Dimensions of the walls:
2,5m / 3m / 4m.



Semi-panoramic wall
and encased curtain

Dimensions of the walls:
2,5m / 3m / 4m.



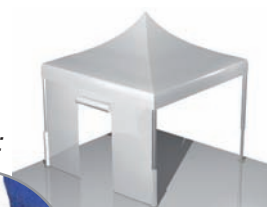
Medium-height wall

Upper section can be hidden.
Dimensions of the walls:
2,5m / 3m / 4m.



Door wall

Central DOOR fastener passage of 1 m 10.
Dimensions of the walls:
2,5m / 3m / 4m.



All XP walls feature a horizontal Keder at foot level this allows our ground-bar to hold the wall in position at the bottom and clips into the feet giving greater stability and less billowing.

XP RANGE SIDE WALL ATTACHEMENT

2

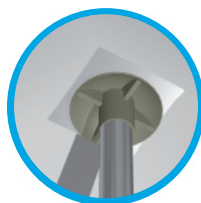
Our system of assembling walls by sliding keder rails provides optimum tension and less wind effect. The keder slides to the interior of the pole with a Velcro grip finishing on the lower section.

**100% airtight,
100% watertight,
Stretched wall,
Reduced wind effect,**

XP ROOF FEATURES

3

Keder rails on the upper section.



Double layer PVC and strap on the cross brace.



Velcro 50mm.



Double layer PVC on the spike crimped, taped seams.



Double layer PVC and strap on each corner.



European safety standard EN 13782