

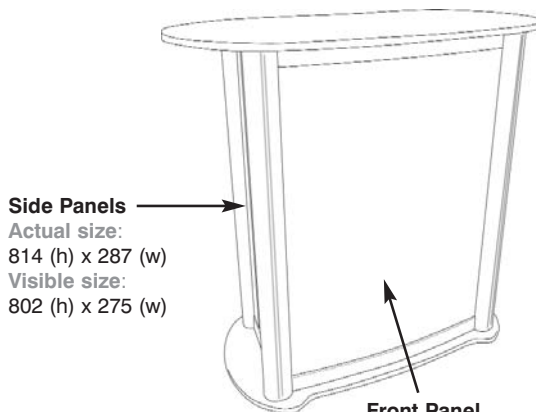
Linear kit 10 is a stylish display and information centre constructed from Aluminium with high quality finish thermoformed laminated tops.



(Graphic panels are not included)

features & benefits

- Ideally suited for exhibition, point of sale and demonstration use.
- Overall assembled dimensions: 1000mm (h) x 1000mm (w) x 530mm (d) approx
- Easy assembly, unit packs flat for portability
- Top and base available in Birch, Silver or Black thermoformed finishes.
- Anodised aluminium posts and beams
- Suitable for Rigid infill graphics (not supplied)
- Wheeled for easy movement
- Carry bag available as an extra cost option



Side Panels

Actual size:
814 (h) x 287 (w)
Visible size:
802 (h) x 275 (w)

Graphic dimensions

Front Panel

Actual size:
820 (h) x 644 (w)
Visible size:
808 (h) x 632 (w)



5mm thick foam board
or equivalent



Internal Space

890 (h) x 600 (w) x 400 (d) approx

(All dimensions shown are in mm and are approx)

hardware & graphic specifications

Overall Assembled dimensions (mm):

980 (h) x 1000 (w) x 500 (d) approx

Weight:

20kg approx (not including graphics)

Recommended graphic substrate:

5mm thick foam board or equivalent

Visible graphic dimensions (mm):

Front Panel x1:

814 (h) x 287 (w) Actual size

802 (h) x 275 (w) Visible size

Side Panels x2 :

820 (h) x 644 (w) Actual size

808 (h) x 632 (w) Visible size

additional info

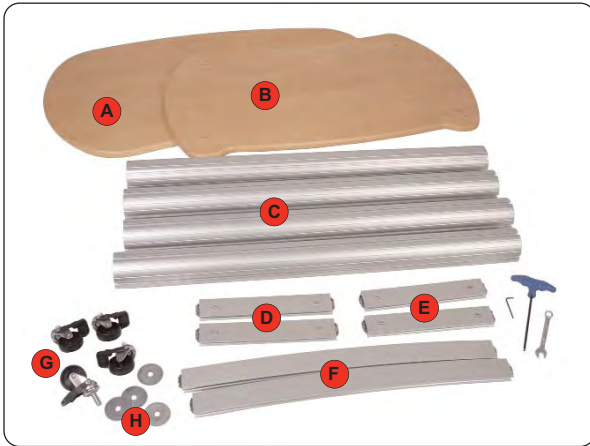
Recommended accessories:

AB212 & AB213 Carry bags
(Linear kit 10 requires both bags)



Castors can be locked
when unit is in use.

Assembly Instructions

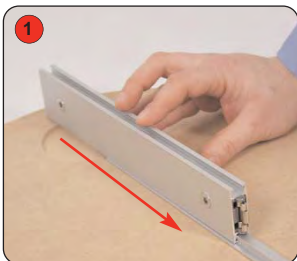


Kit includes:

- 1 x Thermoformed MDF top (A)
- 1 x Thermoformed MDF base (B)
- 4 x Round posts (C)
- 2 x Top beams (D)
- 2 x Base beams (E)
- 2 x Curved beams (F)
- 4 x Castors (G)
- 4 x Washers (H)

Tools:

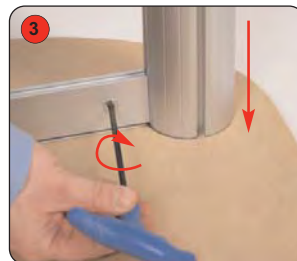
- 5mm Allen key, 2.5mm Allen key and 7mm Spanner



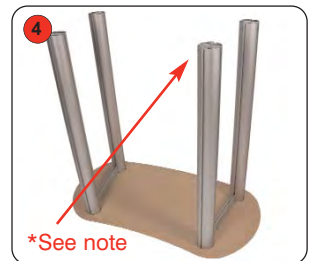
Slide the Base beam onto the rail attached to the Top. Align the beam centrally on the rail.



Secure the Base beam to the top by tightening both grub screws using a 2.5mm Allen key. Repeat for the 2nd Base beam.



Slide Round post into recess on underside of Top. Secure the post to the beam using a 5mm Allen key.



*See note

Attach the remaining posts to the Top. ***Ensure the threaded inserts in the posts are furthest from the Top.**



Slide curved beam into the posts.



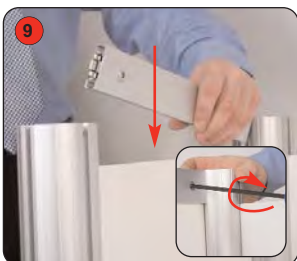
Secure the curved beam using a 5mm Allen key.



Slide the front graphic panel into the posts & curved beam.



Slide both side graphic panels into the posts & beam.



Slide Top beam over the side graphic panels and secure to the posts using a 5mm Allen key. Repeat for the 2nd Top beam.



Slide curved beam over the front graphic panel and secure to the posts using a 5mm Allen key.



Locate the base onto the round posts.



Align washer with each hole in the base and attach a castor. Fit the castor through the base into the round post. Tighten the castor using an 7mm Spanner. Repeat step for the remaining castors.