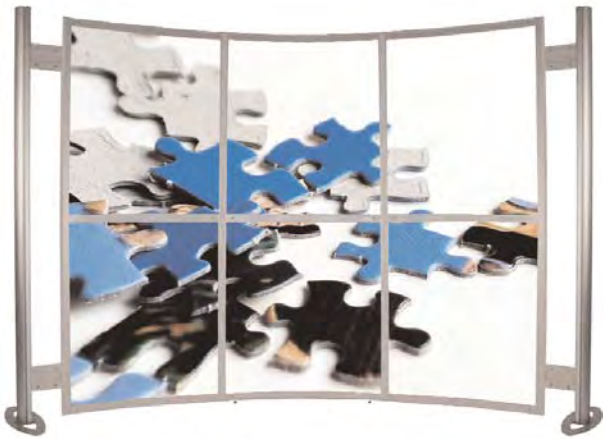


Curved aluminium graphic frame ideal for printable rigid infill substrates or mag taped graphics.



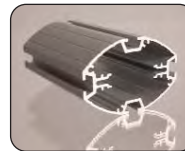
### features & benefits

- Overall assembled size 2000mm (h) x 3200mm (w) x 810mm (d) approx
- Anodised aluminium construction
- Portable, easy assembly
- Available with round or oval profile post options
- Steel oval bases supplied as standard
- 450mm dia steel dome or thermoformed MDF base options also available
- Choice of two recommended graphic fixing options: Rigid infill or mag taped graphics
- Kits are supplied with 1 roll of adhesive backed steel tape enabling mag taped graphics to be easily displayed

### Post options



75mm round



75mm oval

### Base options



Steel oval  
supplied as std  
(weight 2kg approx)



450mm dia Steel dome  
extra cost option  
(weight 7.5kg approx)

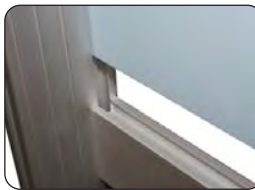


Thermoformed MDF  
extra cost option  
(weight 0.5kg approx)

Recommended  
carry bag: LPB

Recommended  
carry bag: LPB1

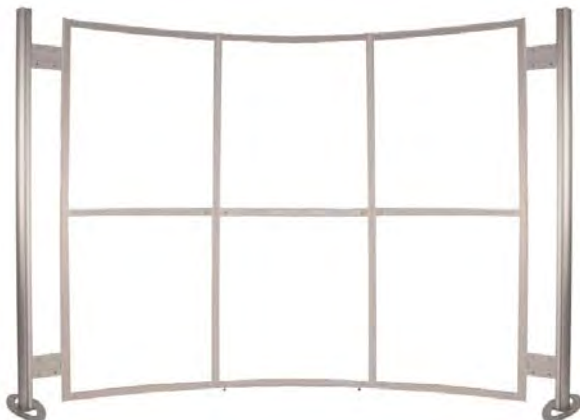
### Graphic fixing options



Rigid infill



Mag taped



### hardware & graphic specifications

#### Hardware dimensions (mm):

2000 (h) x 3200 (w) x 810 (d)  
approx

#### Weight:

19.5kg approx

#### Recommended graphic substrates:

##### Rigid infill:

5mm thick foam board

##### Mag taped:

300micron polyester

#### Visible graphic dimensions (mm):

##### Rigid infill (3 individual panels):

2 at 1922 (h) x 795 (w) actual  
1910 (h) x 783 (w) visible

1 at 1922 (h) x 817 (w) actual  
1910 (h) x 805 (w) visible

##### Rigid infill (6 individual panels):

4 at 945 (h) x 795 (w) actual  
933 (h) x 783 (w) visible

2 at 945 (h) x 817 (w) actual  
933 (h) x 805 (w) actual

##### Mag taped graphic (3 panels):

2000 (h) x 850 (w) (inside curve)  
2000 (h) x 856 (w) (outside curve)

### additional info

#### Recommended accessories:



LN112  
Literature holder



LN111  
LCD Bracket



AC504 Wheeled carry case



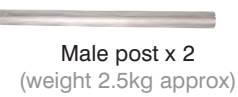
PS1000 light  
200watt  
(see over for  
fixing method)

# Assembly Instructions

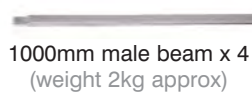
Linear Kit 7 includes:



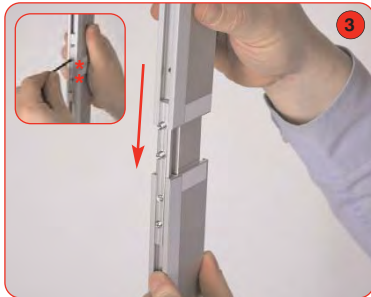
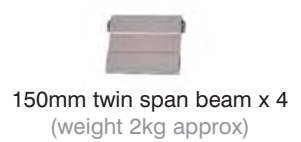
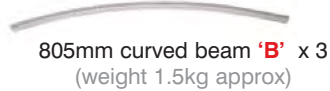
Adjustable foot x 2



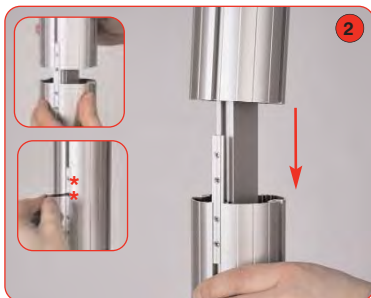
1000mm female beam x 4  
(weight 2kg approx)



783mm curved beam 'A' x 6  
(weight 3kg approx)



Attach 1000mm male beam to 1000mm female beam. Secure grub screws using a 2mm allen key. Repeat step for remaining vertical beams.



Align and slide female post over male post, tighten both grub screws using a 2mm allen key. Repeat step for 2nd post.

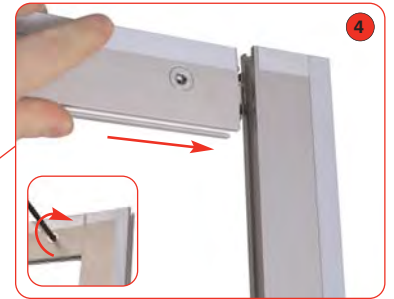
### Notes:

1, Use suitable tin-snips to cut the steel tape to the required lengths

2, If applicable, ensure all applied steel tape is facing to the correct side during assembly.



Optional PS1000 lights (not supplied with the kit) can be fitted to the graphics rail using **US-LINEAR** lighting bracket.



Attach curved beams to the vertical frame sides. Tighten locks using a 5mm allen key. If using rigid infill graphics, slide these in to position before tightening beams.



Attach assembled frame to vertical posts using 4 x 150mm twinspan beams. Tighten locks using a 5mm Allen key.



Attach base to male post using M10 bolt and allen key. Ensure clear washer is between base & post. Repeat step for 2nd post.



Attach adjustable foot to bottom curved rail. Repeat step for 2nd foot.