



For showroom, point of sale, demonstration and exhibition environments Linear kit 9 is the ideal solution as a display and information centre.

features & benefits

- Overall assembled size 2050mm (h) x 845mm (w) x 450mm (d) approx
- Anodised aluminium construction
- Portable, easy assembly
- Available with 75mm round post
- 450mm dia steel dome bases supplied as standard
- Supplied with 3 adjustable A4 leaflet holders
- Choice of two recommended graphic fixing options: Rigid infill or mag taped graphics
- Kits are supplied with 1 roll of adhesive backed steel tape enabling mag taped graphics to be easily displayed



450mm dia Steel dome
extra cost option

(weight 7.5kg approx)

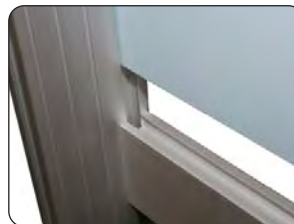
Recommended
carry bag: LPB



Pocket depth:
20mm approx
(weight 1.5kg approx)

Vertical position and
angle of the leaflet
holder can be adjusted

Graphic fixing options



Rigid infill



Mag taped

hardware & graphic specifications

Hardware dimensions (mm):

2050 (h) x 845 (w) x 450 (d)
approx

Weight:

17kg approx

Recommended graphic substrates:

Rigid infill:
5mm thick foam board

Mag taped:
300micron polyester

Visible graphic dimensions (mm):

Rigid infill (2 individual panels):

944 (h) x 422 (w) actual
932 (h) x 410 (w) visible

Rigid infill (1 panel):

1922(h) x 422 (w) actual
1910 (h) x 410 (w) visible

Mag taped graphic (1 panel):

2000 (h) x 500 (w) actual
2000 (h) x 500 (w) visible

additional info

Recommended accessories:



AC504
Wheeled
carry case




PS1000
200watt light
(see over for
fixing method)


Assembly Instructions


Linear Kit 9 includes:



450mm dia Steel dome base & M10 bolt
(weight 6kg approx)



Leaflet holder kit x 3
(weight 4.5kg approx)



Male post x 2
(weight 1kg approx)


955mm female beam 'A' x 2
(weight 1.5kg approx)


955mm male beam 'B' x 2
(weight 1.5kg approx)


Female post x 1
(weight 1kg approx)


500mm horizontal beam 'C' x 2
(weight 1kg approx)


410mm horizontal beam 'D' x 1
(weight 0.5kg approx)



Allen key set



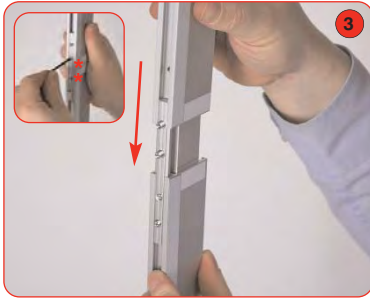
PVC clear washer x 2



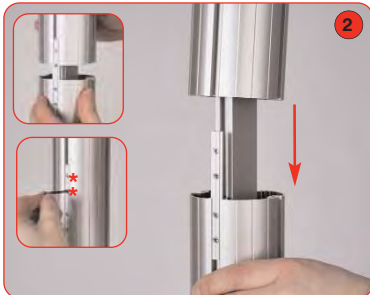
1 x Roll of Steel tape
(for use with Mag taped graphics)



Optional PS1000 lights (not supplied with the kit) can be fitted to the graphics rail using **US-LINEAR** lighting bracket.



Attach 1000mm male beam to 1000mm female beam. Secure grub screws using a 2mm allen key. Repeat step for remaining vertical beams.

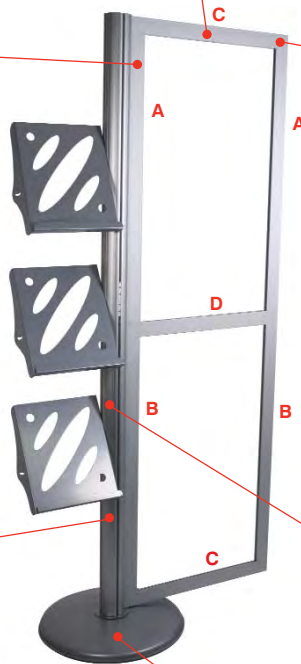


Align and slide female post over male post, tighten both grub screws using a 2mm allen key.

Notes:

1, Use suitable tin-snips to cut the steel tape to the required lengths

2, If applicable, ensure all applied steel tape is facing to the correct side during assembly.



Attach base to male post using M10 bolt and allen key. Ensure clear washer is between base & post



Attach horizontal beams to the vertical frame sides. Tighten locks using a 5mm allen key. If using rigid infill graphics, slide these in to position before tightening beams. Once frame is assembled attach to vertical post. Tighten locks using a 5mm allen key



Attach leaflet holder to the post. Slide flat bar of holder into the channel of linear post.

Ensure thumb fastener threads are flush to the flat bar.

Position & angle holder to suit, tighten both thumb fasteners to secure the holder to the post. Repeat step for remaining holders.