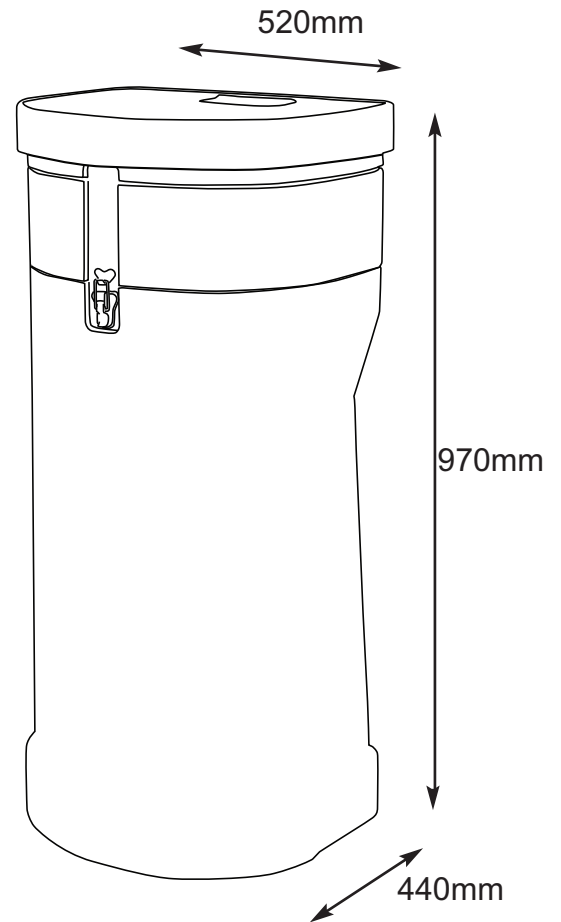




Ideal for safely transporting rolled graphic panels. Manufactured from tough moulded polyethylene with moulded side and top handle making handling easy with integral wheels for ease of use.

**features & benefits**

- Ideal for safely transporting rolled graphic panels.
- Manufactured from tough moulded polyethylene with moulded side and top handle.
- Wheels included for easy transportation
- Case can be locked (padlock not supplied)



Hardware specifications	Additional info
<p><b>Internal size (h) x(d):</b>                      950mm (h) x 390mm (d)</p> <p><b>Weight (when empty):</b>                      7.2kg</p>	<p>Case is suitable for transporting approx 10 Pop-up graphic panels</p>