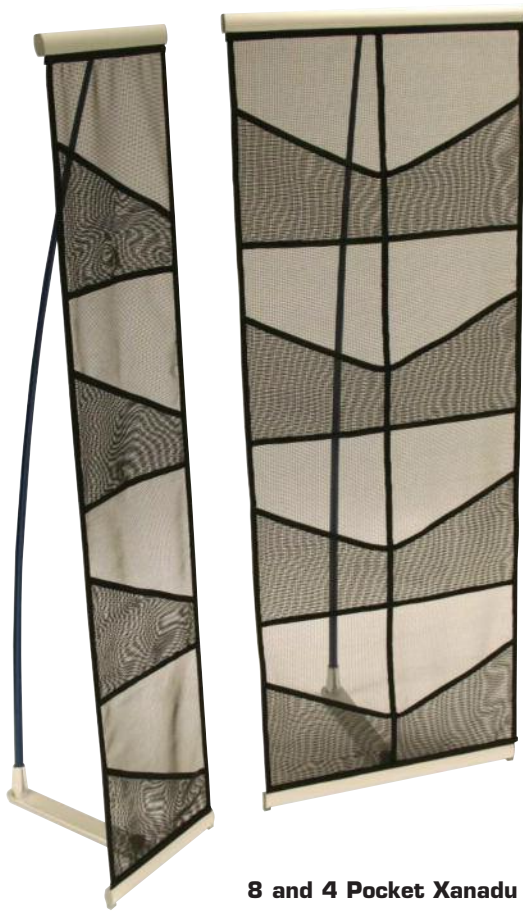


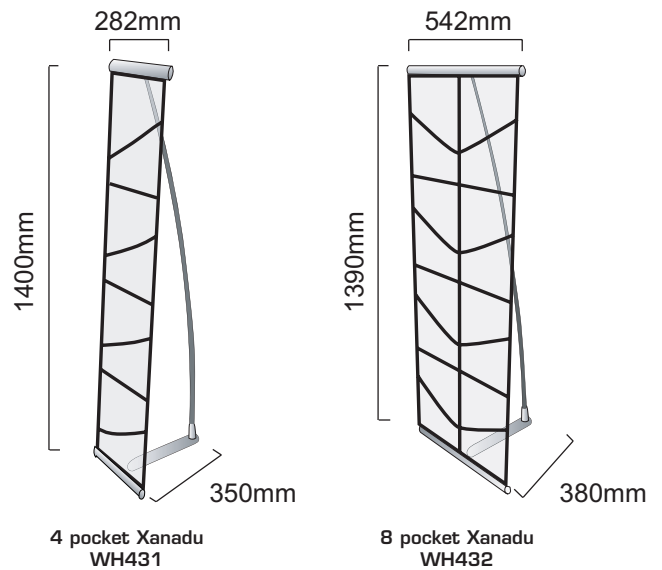
Lightweight and easy to use, The Eco-Brocha is an ideal literature holder for any Exhibition or event.



**8 and 4 Pocket Xanadu**

### features & benefits

- Lightweight components
- Quick and easy to assemble
- 4 pocket or 8 pocket options
- Available in black
- 3 piece construction
- Includes carry bag



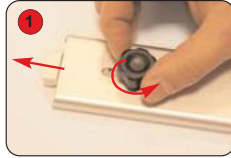
4 pocket	8 pocket	additional info
Hardware Dimensions (mm) 1400 (h) x 282 (w) x 350 (d) Max literature Dimensions (mm): 320 (h) x 240 (w) Weight: 1.3kg approx	Hardware Dimensions (mm) 1390 (h) x 542 (w) x 380 (d) Max literature Dimensions (mm): 320 (h) x 240 (w) Weight: 1.7kg approx	Included in kit: Fabric literature holder, stabilising foot, bungee pole and carry bag Availability: Black

We are continually improving and modifying our product range and reserve the right to vary the specifications without prior notice. All dimensions and weights quoted are approximate and we accept no responsibility for variance. E&OE.

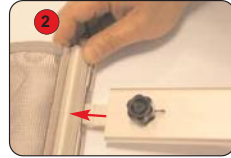
## Assembly Instructions



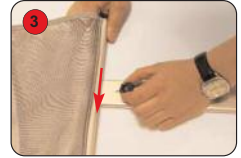
Kit includes: bungee pole, carry bag, fabric literature holder and stabilising foot.



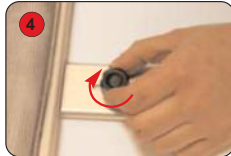
1 Loosen the screw on the stabilising foot and slide out the extension.



2 Take the literature holder and slide the stabilising foot onto the extension.



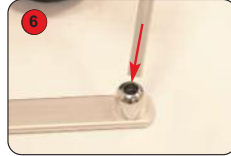
3



4 Once the rail is centralised on the foot, tighten into position by turning the screw.



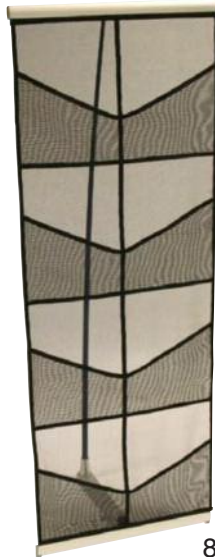
5 Open up the bungee pole and connect each part together.



6 Fit the wider end of the bungee pole into the base.



7 Bend the pole slightly, hold up the literature holder and fit the top rail onto the pole.



8 pocket



4 pocket