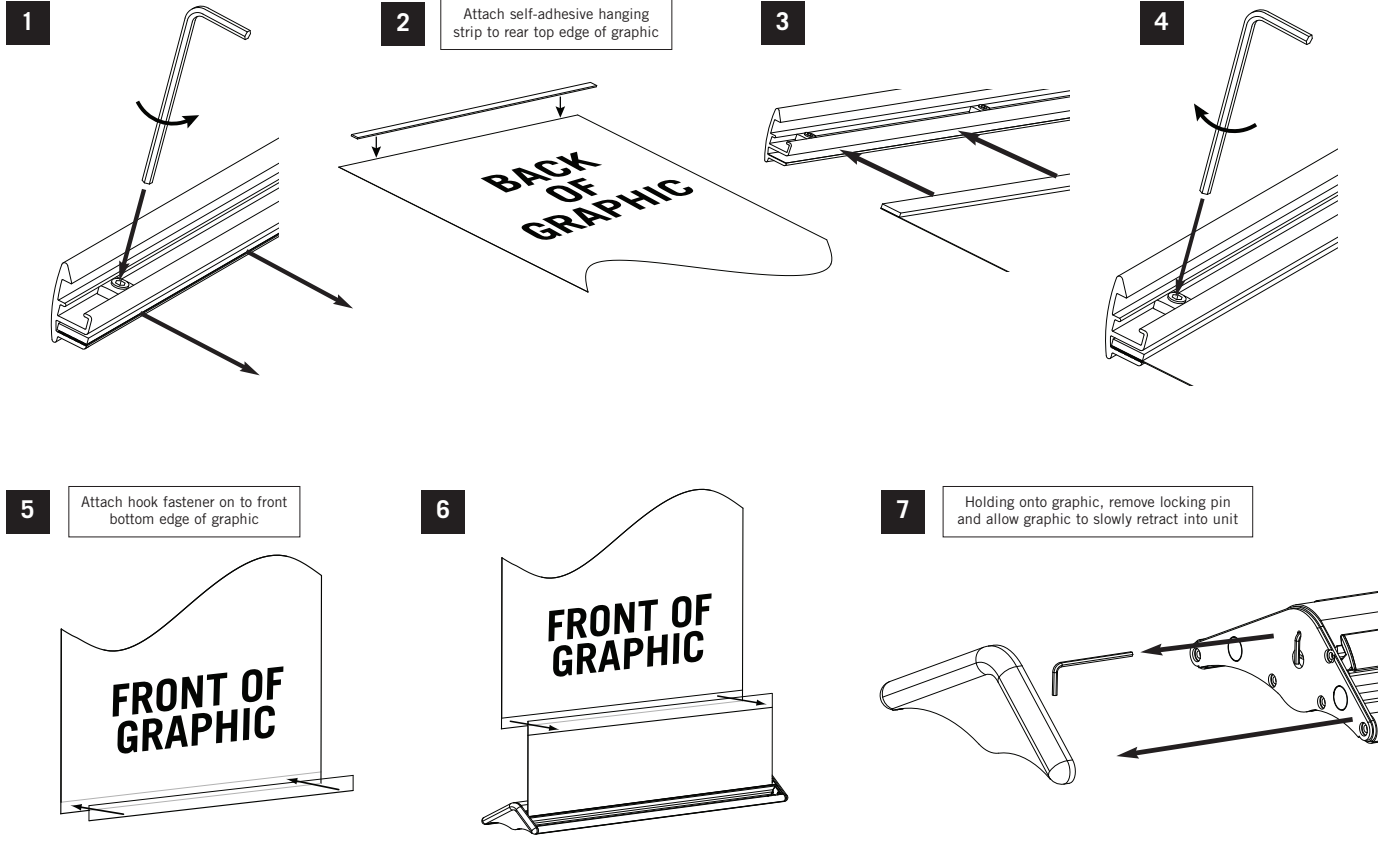
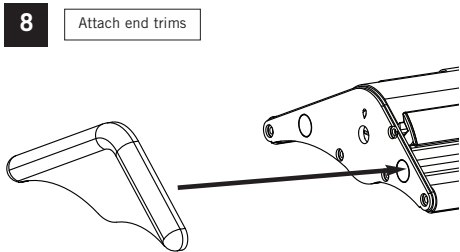


GRAPHIC ATTACHMENT



IMPORTANT NOTICE: To ensure a proper bond between graphic and hook fastener, pressure must be applied and the adhesive should be allowed to cure for 24 hours before attaching graphic to system.



ADDING OR REMOVING GRAPHIC TENSION

ADDING TENSION
Insert a standard flat headed screwdriver into slot located in the end of unit and turn clockwise to add extra graphic tension.

REMOVING TENSION
To un-tension graphic panel place a flat headed screwdriver into the slot and push to disengage ratchet. Hold in and turn anti-clockwise until tension in spring is released. To remove graphic panel carefully peel it off leader sheet. The graphic hanger can also be removed or a new hanger can be purchased.

SPECIFICATIONS

GRAPHIC PANEL SIZE

Finished graphic panel size
2300 x 800mm
(Includes 200mm bleed)

Visual graphic area
2100 x 800mm

Maximum finished graphic panel thickness
250 micron

SYSTEM SIZES

Boxed size

800mm = 915 (L) x 250 (W) x 115 (D)mm

Assembled size

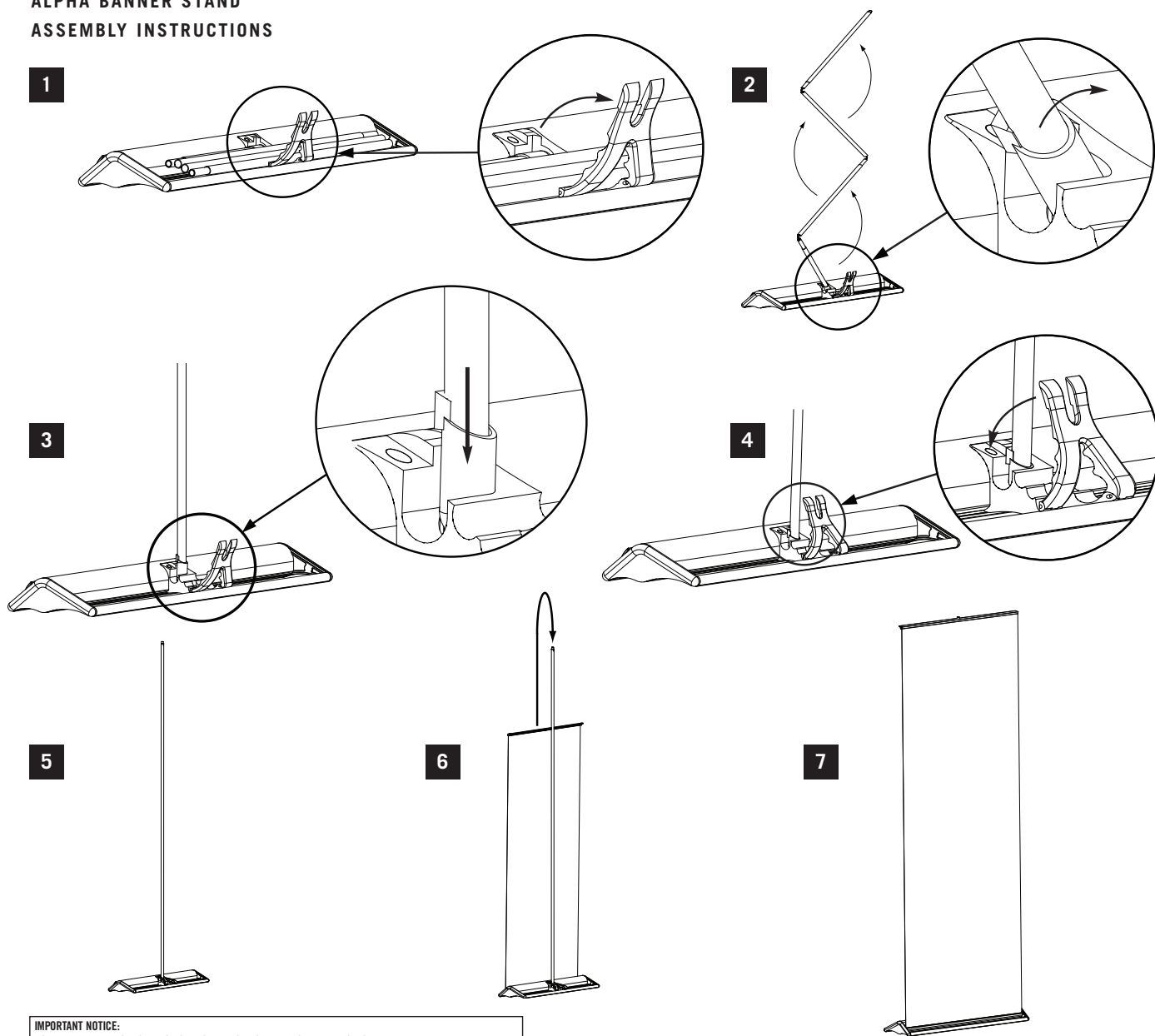
800mm = 835 (W) x 200 (D) x 2145 (H)mm

BOXED WEIGHT

800mm = 4.4kg



ALPHA BANNER STAND ASSEMBLY INSTRUCTIONS



IMPORTANT NOTICE:
When retracting a graphic always slowly guide it into base housing, otherwise graphic damage may occur.

SPECIFICATIONS

GRAPHIC PANEL SIZE

Finished graphic panel size
2300 x 800mm
(Includes 200mm bleed)

Visual graphic area
2100 x 800mm

Maximum finished graphic panel thickness
250 micron

SYSTEM SIZES

Boxed size
800mm = 915 (L) x 250 (W) x 115 (D)mm

Assembled size
800mm = 835 (W) x 200 (D) x 2145 (H)mm

BOXED WEIGHT
800mm = 4.4kg

