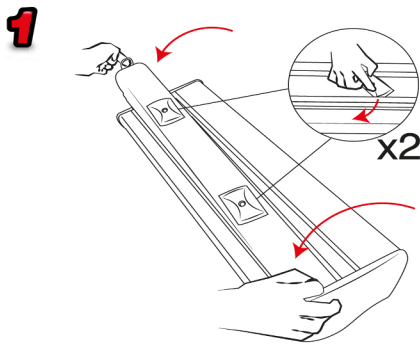
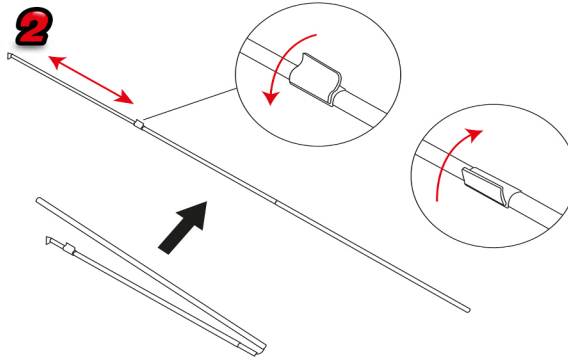


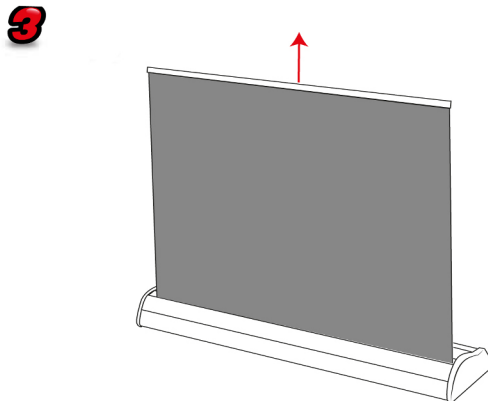
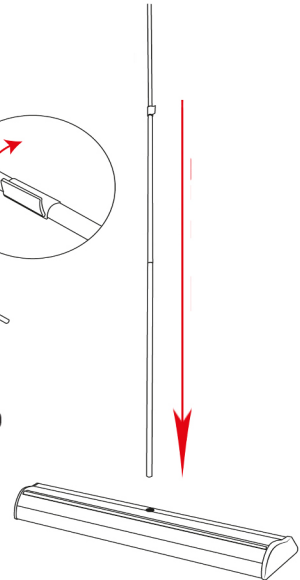
Assembly Instructions



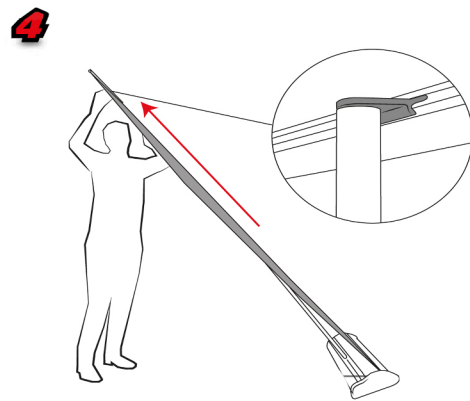
Turn the base over and open the pole retainers. Remove the pole from the base. **Important: Close the pole retainers before using the banner stand.**



Set the telescopic pole to the desired graphic height. **Twist clockwise to lock, anti-clockwise to unlock.** Fit the pole into the base.



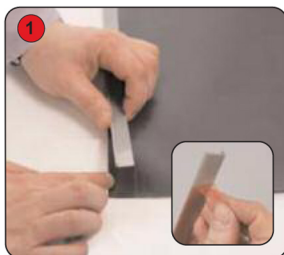
Lift the top rail to raise the graphic from the base. Lean the banner stand backwards and continue to extend the graphic.



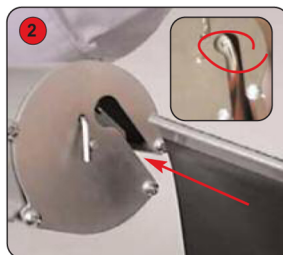
Secure the graphic into position by locating the top rail onto the pole.

Important: Hold the top rail whilst lowering the banner to prevent damage to the graphic. (do not drop)

Graphic attachment - Cassette



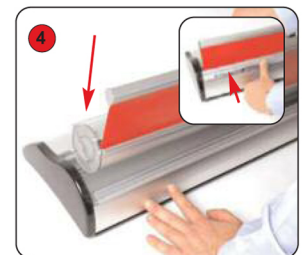
Slide the plastic insert from the cassette & adhere to the **back** of the graphic.



Slide the insert and graphic into the cassette, aligning the insert into the channel.



Whilst holding the graphic, remove the locking pin from the base and gently allow the graphic to retract.



Load the cassette into the base and close the snap retainer to secure.

CAUTION: ensure fingers are clear of the snap retainer when closing.

WARNING: Always attach graphic to cassette and top rail before removing the locking pin.