

PCAP Touch Screen Kiosk (TAO) - Assembly Guide

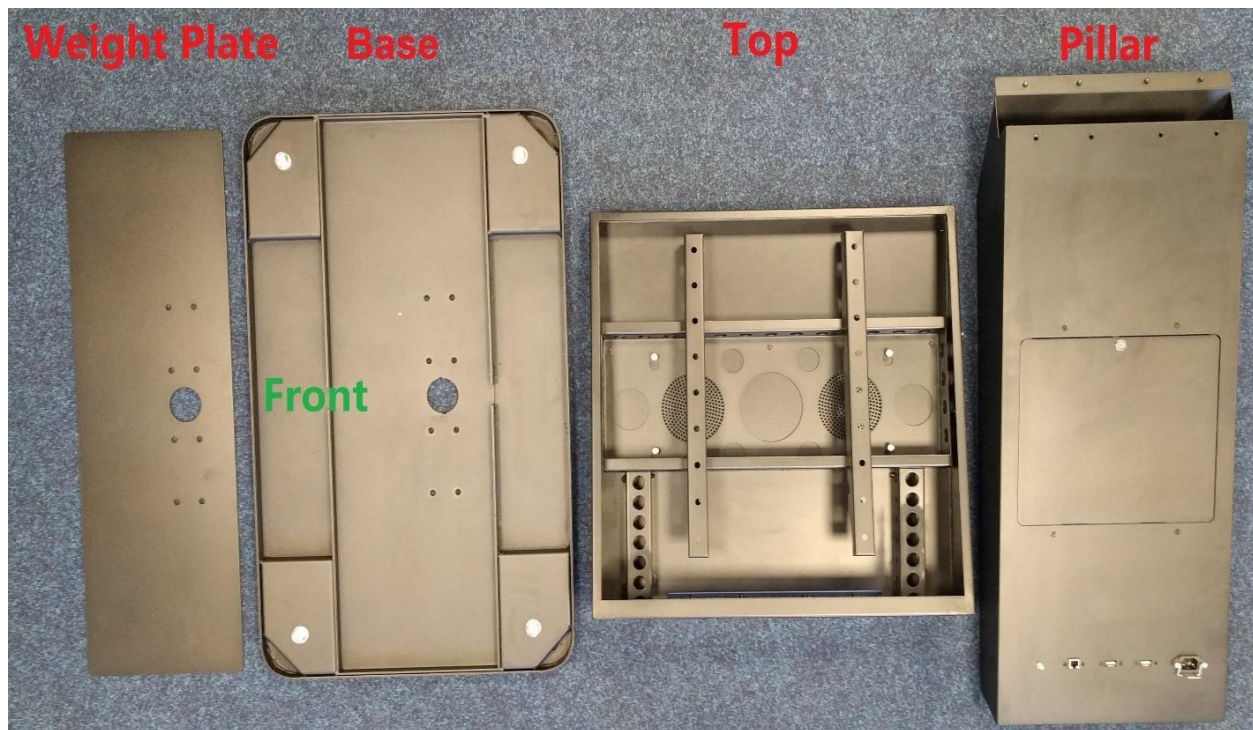


Overview

i Please ensure that the stand and screen are handled in a safe manner at all times and where necessary more people are available. The assembly must be carried out on a soft surface to avoid scratching the stand or screen.

Box Contents

- 1 x PCAP Touch Screen
- 8 x M8 hexagon socket head bolts
- 8 x M4 countersunk Phillips head screws
- 4 x M8 screws (for mounting arms to screen)
- Top (including screen bracket)
- Pillar (including external ports and extension cables)
- Key for locker door
- Base and weight plate (increase the overall stand weight to make it more stable)
- Mains Plug to IEC C13 (Kettle Lead) Power Cable



You will also need:

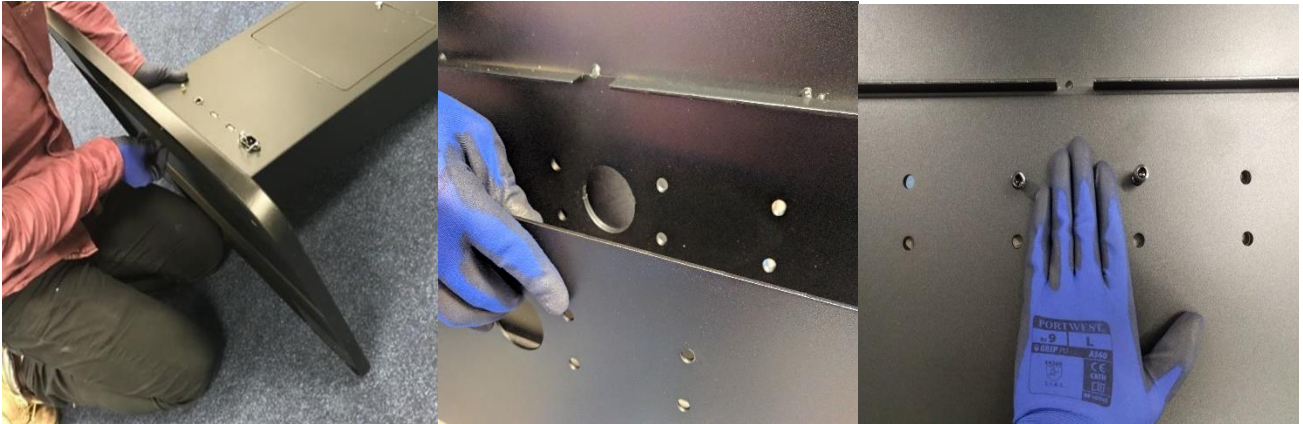
- Size 5 hex key
- Size 6 hex key
- Phillips #2 screwdriver

Assembly

Step 1

Lay down the pillar on the ground with the inputs facing up, then offer up the base and weight plate with the bolts aligned. Please ensure the front side of the pillar is facing at bottom.

Screw two of the bolts into the bracket manually.



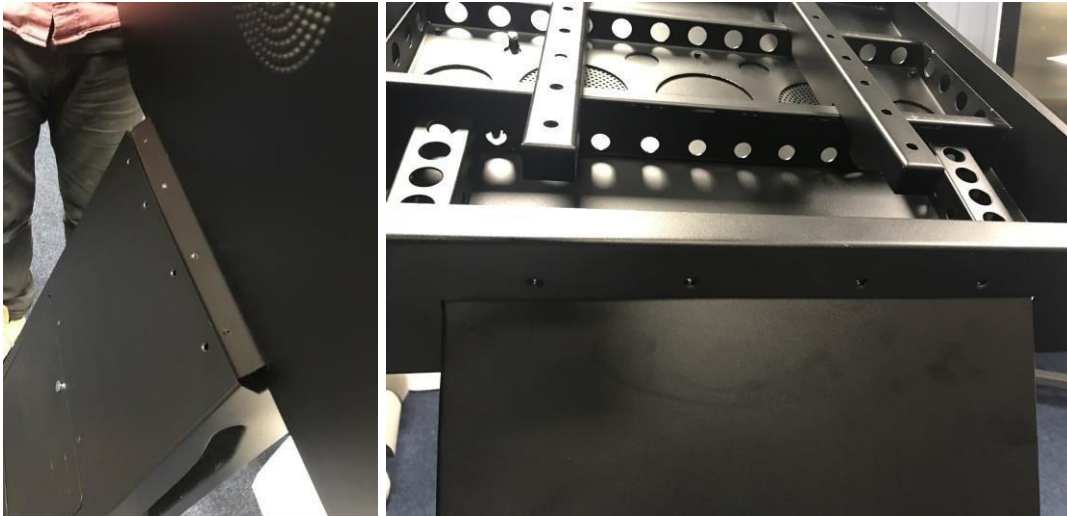
Step 2

Screw the remaining six M8 hexagon socket head bolts in by hand then tighten all eight up with a size 6 hex key.



Step 3

Stand the base and pillar up to a vertical position. Place the top onto the pillar making sure that the back part of the top piece slides inside the pillar. This will ensure that the eight holes for the screws line up correctly.

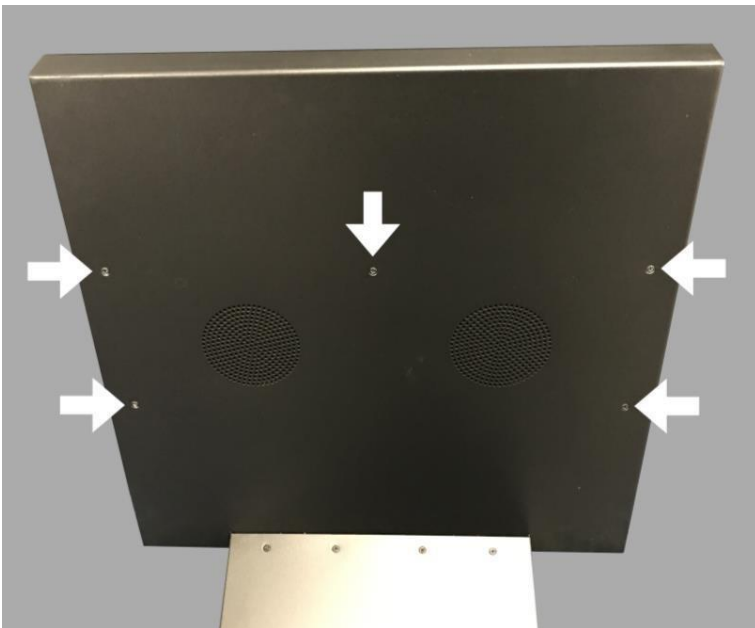


Step 4

Fix the top to the pillar by screwing four of the M4 countersunk Phillips head screws into the front and the other four into the rear.

Step 5

From the rear of the top piece unscrew the five screws holding the bracket in place. Please retain these screws to fix the bracket back in place later.



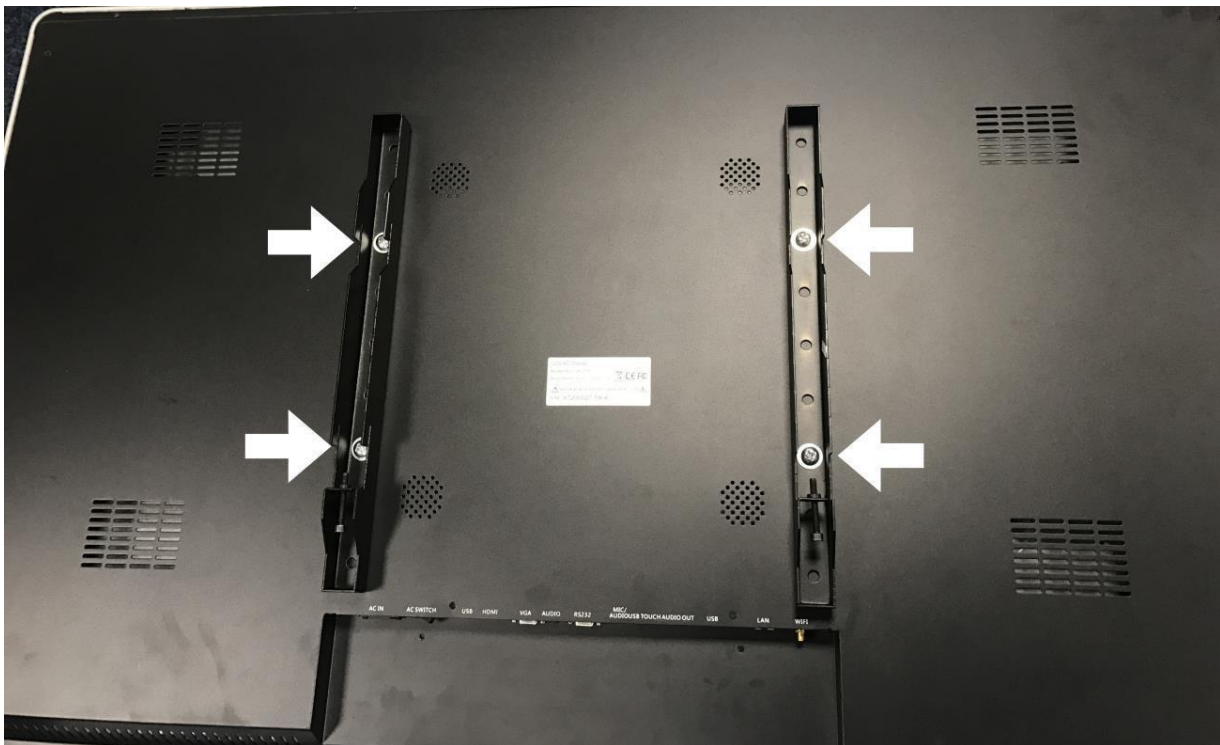
Step 6

Slide the bracket, as well as the two arms connected to it, up and out of the top piece.



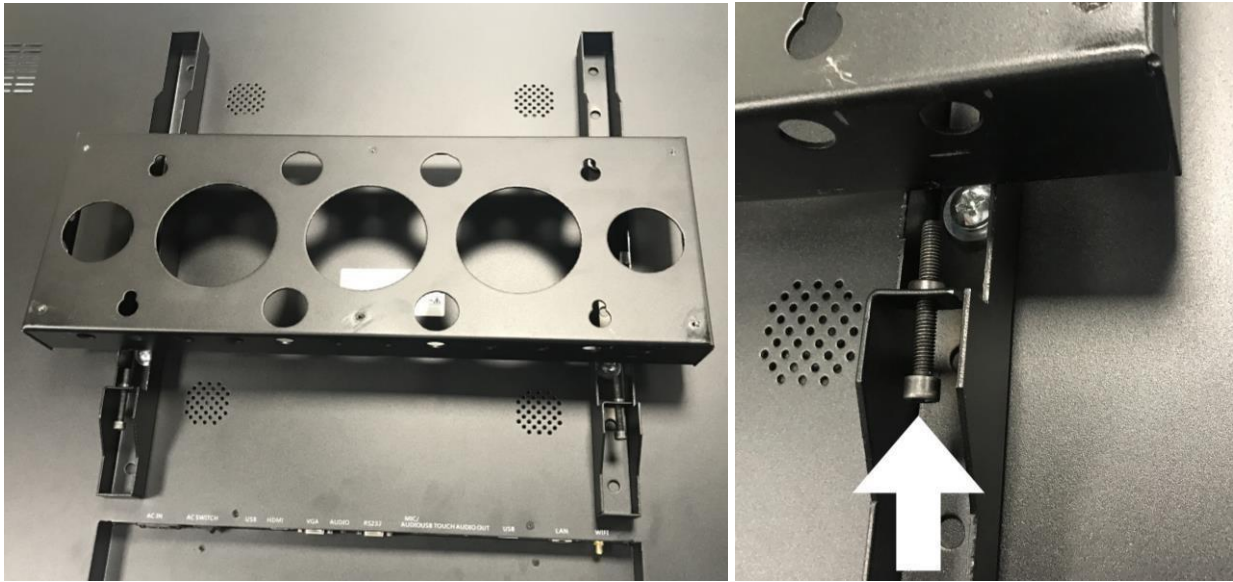
Step 7

Remove the two arms from the bracket and mount these to your screen using the four M8 screws provided. If these are not appropriate for your screen please use the correct screws to fix the arms to your screen.



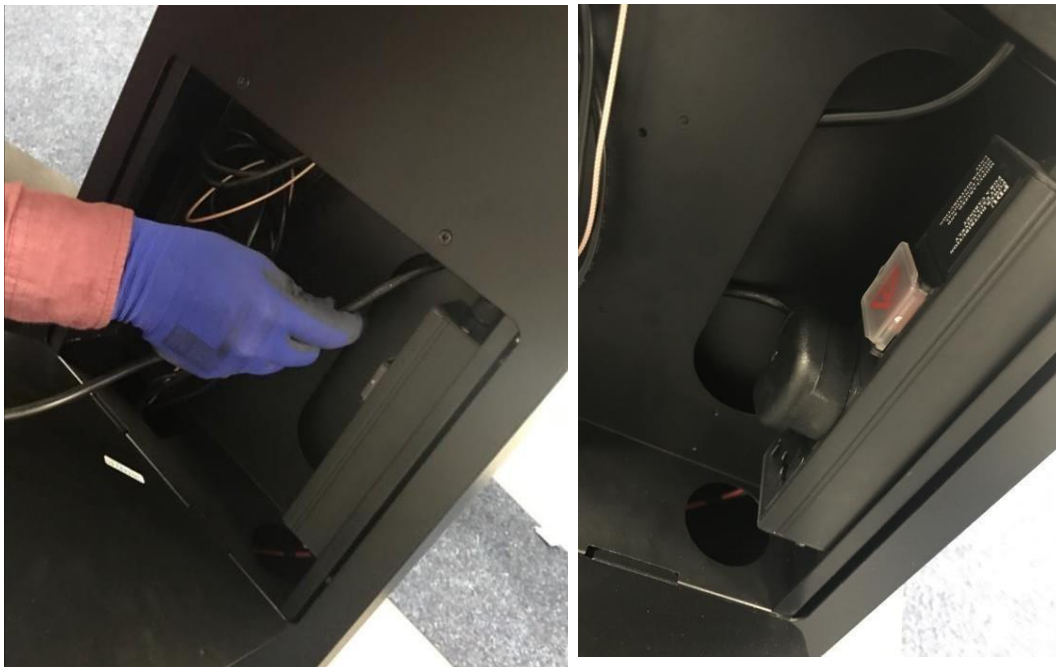
Step 8

Attach the bracket back onto the arms and fix the arms to the bracket by screwing in the hexagon socket head bolts attached using a size 5 hex key.



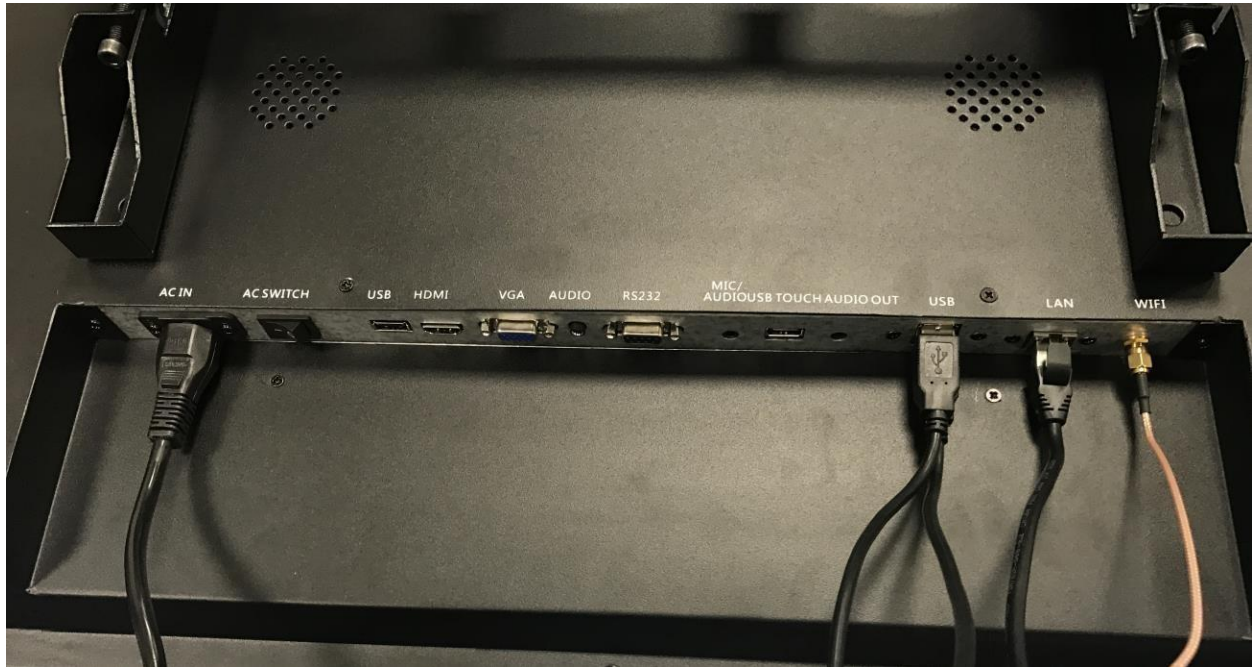
Step 9

Open the locker door and feed the power cable of your screen up through the pillar (as well as the other extension cables) and plug the other end into the socket inside the locker door.



Step 10

Connect the ends of extension cables, including the power cable, to the inputs of your screen.



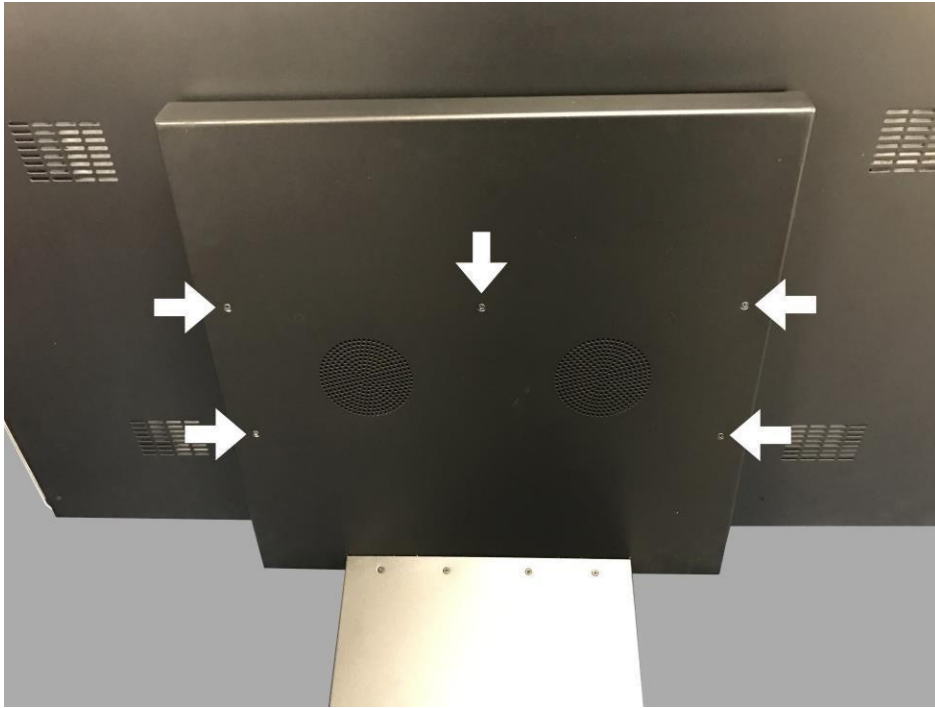
Step 11

Lift the screen and bracket up to the top piece so the bracket connects to the top piece then slides down into position.



Step 12

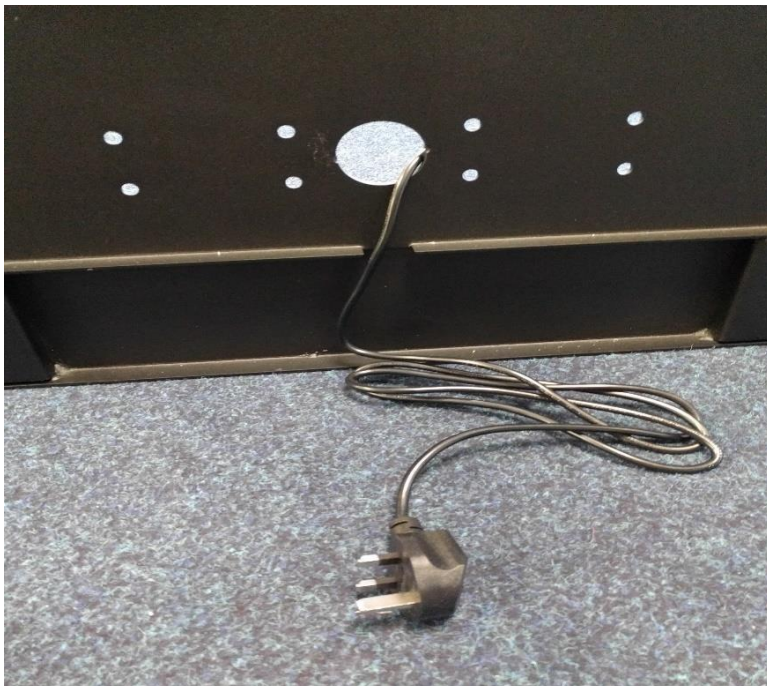
From the rear of the top piece screw the five screws back in to hold the bracket in place.



Step 13

Finally, using the external connections at the rear of the pillar, connect your power cable, Wi-Fi aerial or Ethernet cable.

Step 14



Please bear in mind, cable could also go through the bottom to the pillar alternatively rather than using the Kettle plug that fixed on pillar.