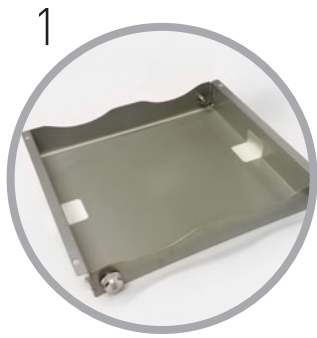


AV22", AV32" and AV42" ScreenStand Assembly Instructions



1
Start your assembly at stage 5 if the AV tray option was not required.



2
Place the ScreenStand base upside down.



3
Position the AV Tray onto the base lining up the fixing holes.



4
Using the 4 screws and washers provided, securely fasten the AV Tray to the ScreenStand base.



5
Pull off both side trim mouldings.



6
Loosen clamp bracket at bottom of column assembly.



7
Position column centrally within central channel and fully tighten both clamp bracket screws.



8
Slide each curved profile into opposite ends of the central channel ensuring uprights arc away from column.



9
Use the top rail profile to determine the correct distance between the two curved uprights.



10
Ensure uprights are positioned centrally and tighten pre-located screws (two per upright). Replace both side trim mouldings.



11
Slot your graphic in between the uprights, and cap off with the push-fit top rail.



12
Bolt your monitor to the Vesa mount (AV22") or universal mount bracket (AV32" and AV42"). See the instructions supplied with your monitor.

