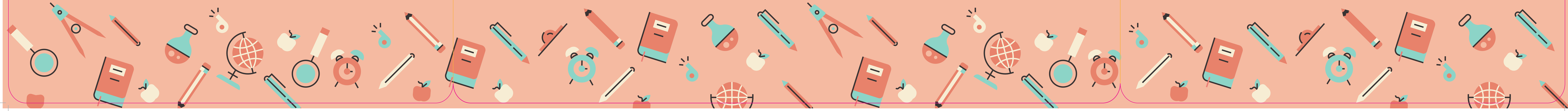


PLEASE KEEP 2M APART AT ALL TIMES



[illegible]

The image is a full-page illustration of a school-themed workspace. The background is a solid light blue. The desk surface is divided into three main sections. On the left is a 'SCHOOL TIMETABLE' section with a white grid. The grid has five rows labeled 'MONDAY', 'TUESDAY', 'WEDNESDAY', 'THURSDAY', and 'FRIDAY' on the left side. Each row has five empty columns for scheduling. Above the grid is a small circular icon with a blue center and a black outline. In the center of the desk is a large white rectangular area with the text 'PLEASE KEEP 2M APART AT ALL TIMES' in a simple, black, sans-serif font. On the right is a 'NOTES' section with three vertical columns of white paper, each with horizontal lines for writing. Above the first column is a small circular icon with a blue center and a black outline. The entire illustration is framed by a decorative border of various school supplies, including pencils, pens, erasers, a globe, a clock, a book, a magnifying glass, and a lightbulb. The supplies are in various colors (blue, red, yellow, green) and are scattered around the edges of the desk.

SCHOOL
TIMETABLE

MONDAY					
TUESDAY					
WEDNESDAY					
THURSDAY					
FRIDAY					

PLEASE KEEP 2M APART AT ALL TIMES

NOTES

Three vertical columns of lined paper for taking notes.

The image is a full-page illustration of a school-themed workspace. The background is a solid light blue. The desk surface is divided into three main sections. On the left is a 'SCHOOL TIMETABLE' section with a white grid. The grid has five rows labeled 'MONDAY', 'TUESDAY', 'WEDNESDAY', 'THURSDAY', and 'FRIDAY' on the left side. Each row has five empty columns for scheduling. Above the grid is a small circular icon with a blue center and a black outline. In the center of the desk is a large white rectangular area with the text 'PLEASE KEEP 2M APART AT ALL TIMES' in a simple, black, sans-serif font. On the right is a 'NOTES' section with three vertical columns of white paper, each with horizontal lines for writing. Above the first column is a small circular icon with a blue center and a black outline. The entire illustration is framed by a decorative border of various school supplies, including pencils, pens, erasers, a globe, a clock, a book, a magnifying glass, and a lightbulb. The supplies are in various colors (blue, red, yellow, green) and are scattered around the edges of the desk.

The image is a full-page illustration of a school-themed workspace. The background is a solid light blue. The desk surface is divided into three main sections. On the left is a 'SCHOOL TIMETABLE' section with a white grid. The grid has five rows labeled 'MONDAY', 'TUESDAY', 'WEDNESDAY', 'THURSDAY', and 'FRIDAY' on the left side. There are five empty columns for scheduling. In the center is a large white rectangular area with the text 'PLEASE KEEP 2M APART AT ALL TIMES' in a simple, black, sans-serif font. On the right is a 'NOTES' section with three vertical columns of white paper, each with horizontal lines for writing. The entire workspace is surrounded by a decorative border of various school supplies, including pencils, pens, erasers, a globe, a clock, a book, a magnifying glass, and a lightbulb. The supplies are in various colors (red, blue, green, yellow) and are scattered around the edges of the workspace.