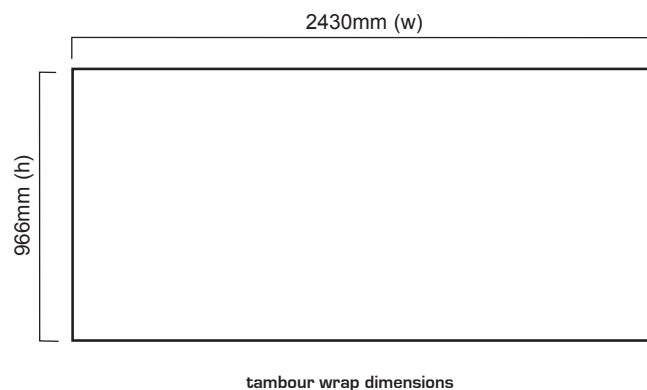




Distinctive styling combined with ease of use make the Elan unit an ideal addition to any Exhibition stand.

features & benefits

- Flat pack furniture constructed from composite materials and flexible MDF tambour
- Easy to transport and quick to assemble
- No tools required
- Internal storage area
- Load bearing upto 75kgs approx
- Additional accessories available



hardware specifications	wrap specifications	additional info
<p>Hardware Dimensions (mm) 1000 (h) x 1000 (w) x 550 (d)</p> <p>Weight: 18.5kg approx</p> <p>Carry bag/case Dimensions (mm): 1050 x 650 x 160</p>	<p>Base Wrap Dimensions (mm): 966 (h) x 2430 (w)</p> <p>If applying a graphic to the wrap, an allowance should be made to its size to accommodate material type, thickness etc.</p>	<p>Availability:</p> <p>Choice of fabric wrap colours. Laminate colours available in black, beech or rosewood.</p> <p>Optional accessories:</p> <p>Carry bags or cases, 50w LV Jack socket lighting, Internal shelving, aperture cutouts.</p>



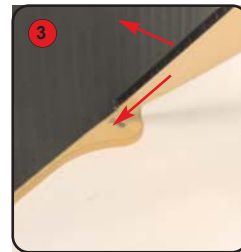
Kit includes: Top, tambour wrap, front 'fin' and base



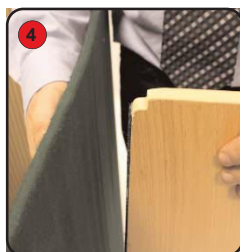
Place the base on the floor with the ridging uppermost. Attach the tambour to the base.



Make sure that the hook fastener on both the tambour and base fit securely together.



Slot the narrow end of the 'fin' into the hole on the front of the base.



Push the side of the 'fin' against the tambour wrap to secure the fit.



Place the top onto the tambour wrap and secure using the hook fastener.



It may be necessary to open some of the wrap to fit the top onto the hook fastener.

