

## SPECIFICATIONS

**Graphic Panel Size**  
A1 [841mm x 594mm]

**Visual Area**  
814mm x 577mm

### SYSTEM SIZES

**Assembled size**  
1215 [h] x 740 [w] x 610mm [d]

### Boxed size

Box 1 = 1255 [h] x 775 [w] x 90mm [d]  
Box 2 = 750 [h] x 620 [w] x 160mm [d]

### WEIGHTS

**Assembled weight [without water]**  
20kg

**Assembled weight [with 30 litres of water]**  
50kg

### Boxed weights

Frame = 21.6kg  
Base = 3.4kg  
Total Boxed Weight = 25kg

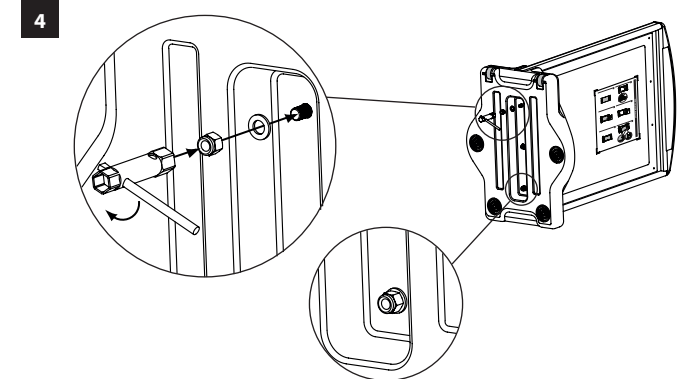
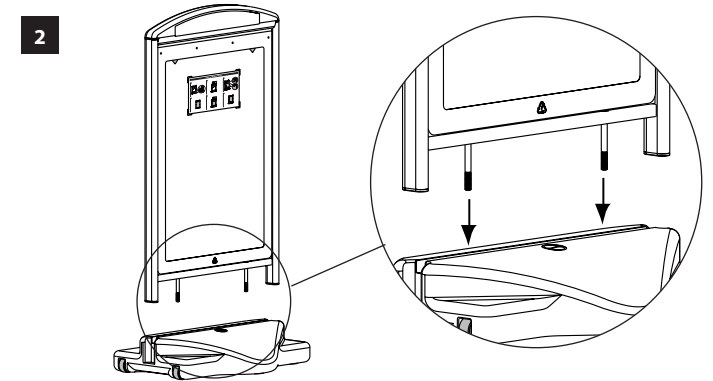
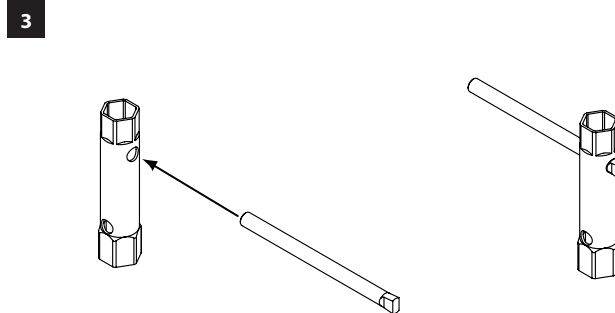
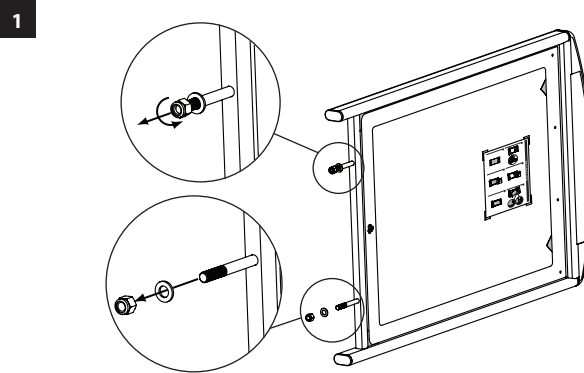
### BASE CAPACITY

30 litres [1 litre weighs 1kg]

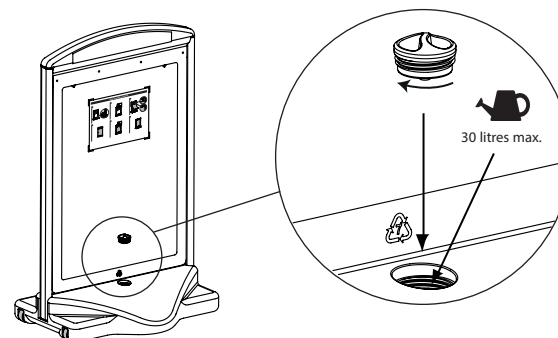
## COMPONENT LIST

- 1 off – Frame assembly
- 1 off – Plastic base
- 2 off – M12 nut
- 2 off – Washer
- 1 off – Box spanner
- 1 off – Filler cap

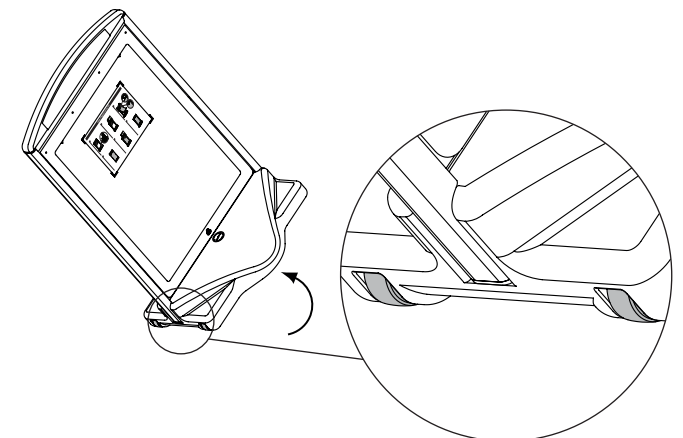
## ICON – ASSEMBLY INSTRUCTIONS



## FILLING WITH WATER



## WHEELING INTO POSITION



**N.B.** 1.5kg of refined salt is included inside base to prevent the water freezing.

## ICON PLUS

### SPECIFICATIONS

#### Product code

Icon Plus - 92050

#### Graphic Panel Size

A0 (1189mm x 841mm)

#### Visual Area

1162mm x 824mm

### SYSTEM SIZES

#### Assembled size

1633 (H) x 986 (W) x 814 (D)mm

#### Boxed size

Frame - 1635 (L) x 1011 (W) x 70 (D)mm

Base - 996 (L) x 824 (W) x 212 (D)mm

### WEIGHTS

#### Assembled weight [without water]

29Kg

#### Assembled weight [with water]

102Kg

#### Boxed weights

Frame - 20Kg

Base - 12Kg

### BASE CAPACITY

70 Litres [1 litre weighs 1kg]

### COMPONENT LIST

1 off - Frame

1 off - Base

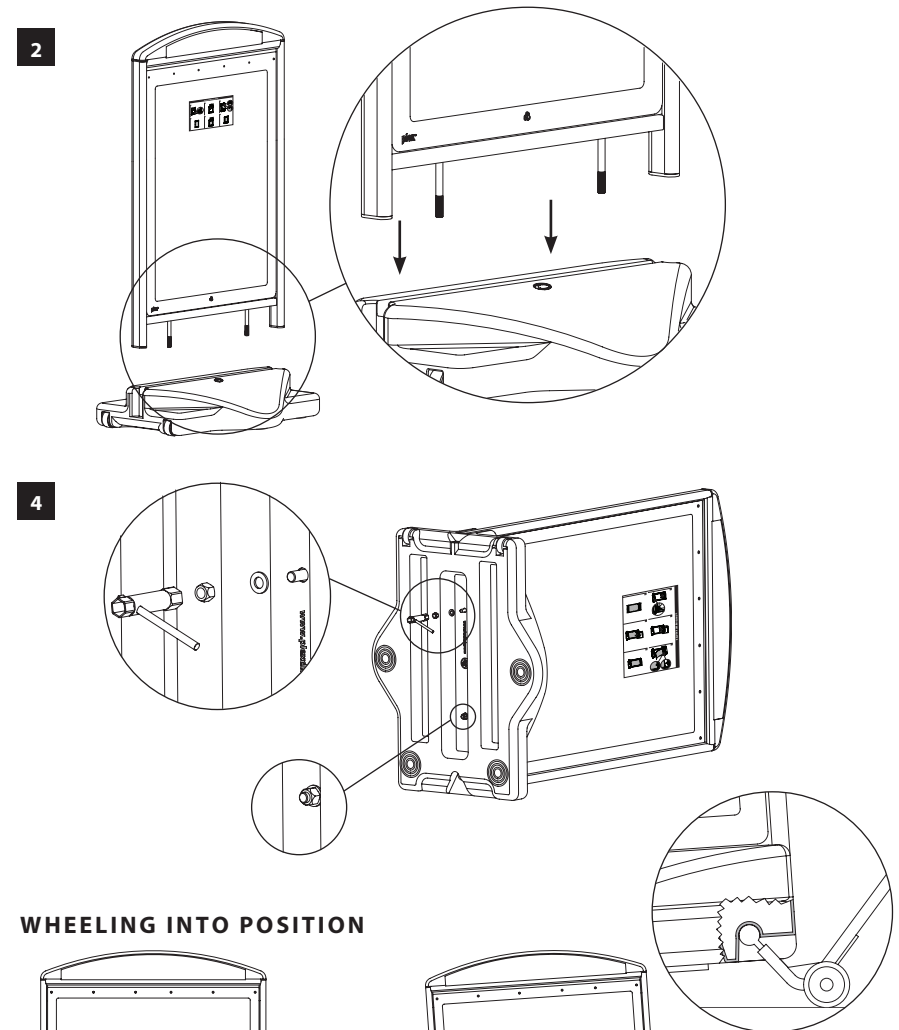
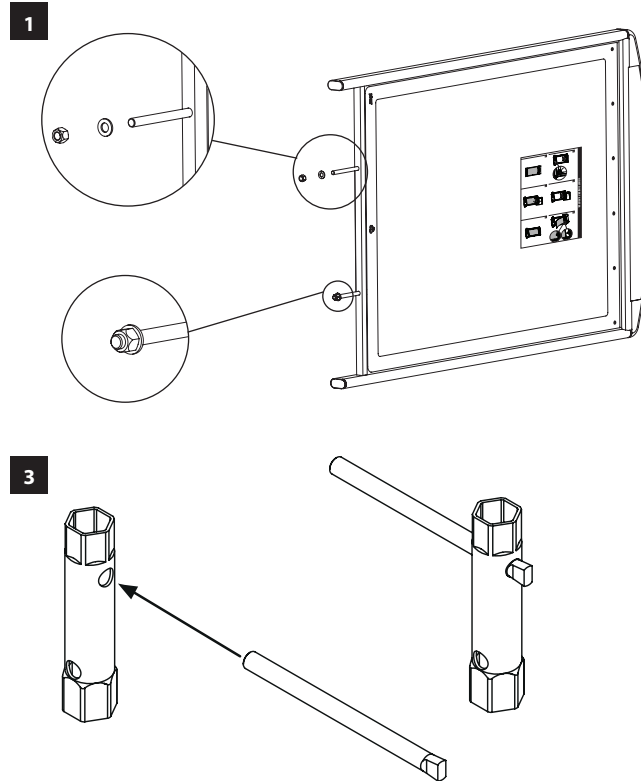
2 off - M12 nut

2 off - Washer

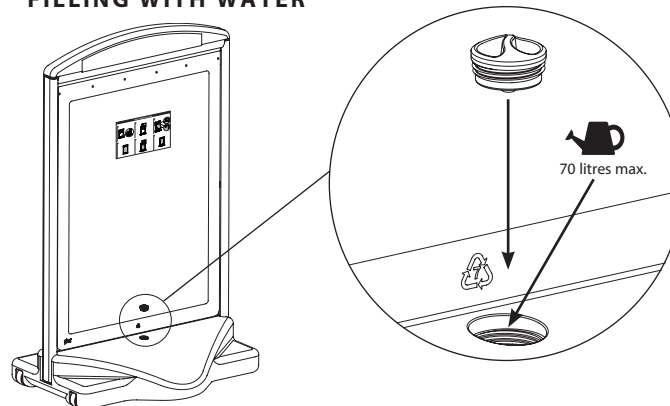
1 off - Box spanner

1 off - Filler cap

### ASSEMBLY INSTRUCTIONS

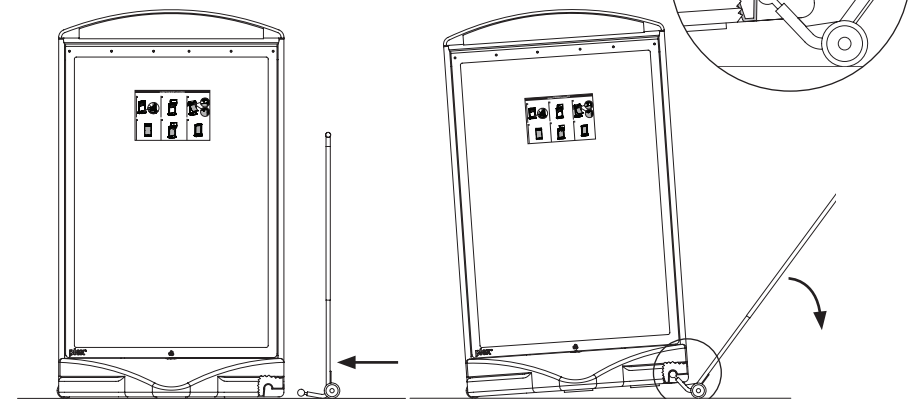


### FILLING WITH WATER



**N.B.** 3.5kg of refined salt is included inside base to prevent the water freezing.

### WHEELING INTO POSITION



**\*WHEN FULL, DO NOT MOVE WITHOUT TROLLEY**

## ICON MAX

### SPECIFICATIONS

#### Product code

60 x 40 Icon - 91930

#### Graphic Panel Size

60" (H) x 40" (W) (1524mm x 1016mm)

#### Visual Area

1497mm x 999mm

### SYSTEM SIZES

#### Assembled size

2006 (H) x 1161 (W) x 1000 (D)mm

#### Boxed size

Frame - 2010 (L) x 1187 (W) x 70 (D)mm

Base - 1171 (L) x 1010 (W) x 220 (D)mm

### WEIGHTS

#### Assembled weight [without water]

43.5Kg

#### Assembled weight [with water]

151Kg

#### Boxed weights

Frame - 27.5Kg

Base - 19.5Kg

### BASE CAPACITY

108 Litres [1 litre weighs 1kg]

### COMPONENT LIST

1 off - Frame

1 off - Base

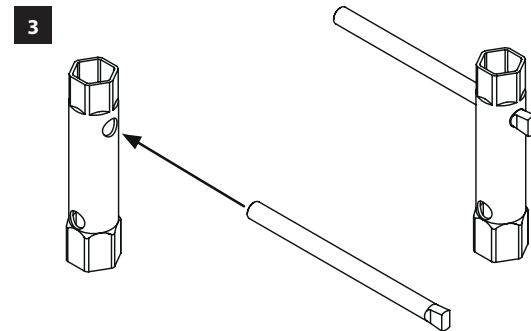
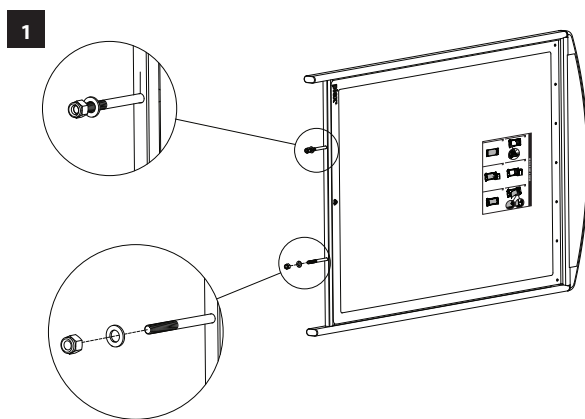
2 off - M12 nut

2 off - Washer

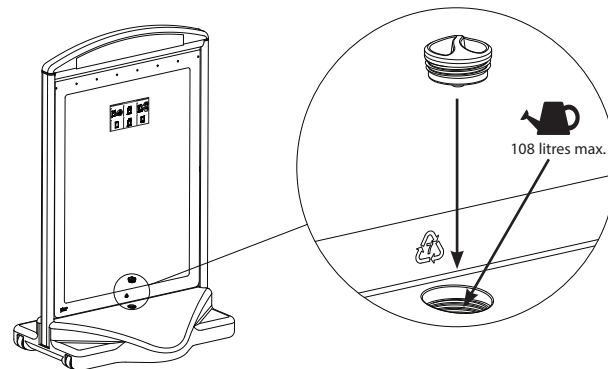
1 off - Box spanner

1 off - Filler cap

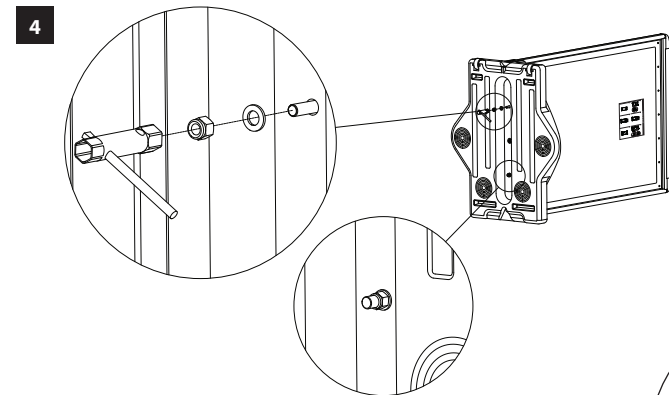
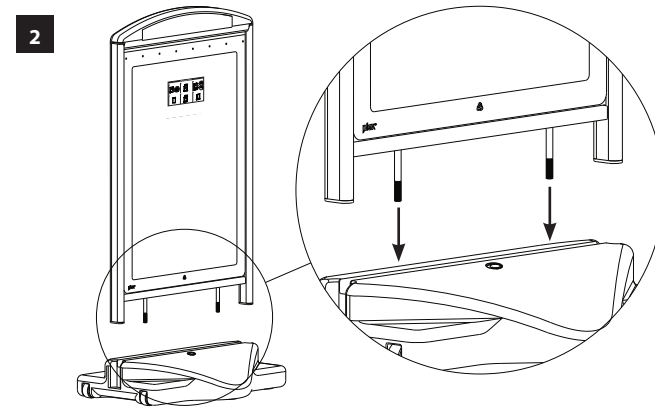
### ASSEMBLY INSTRUCTIONS



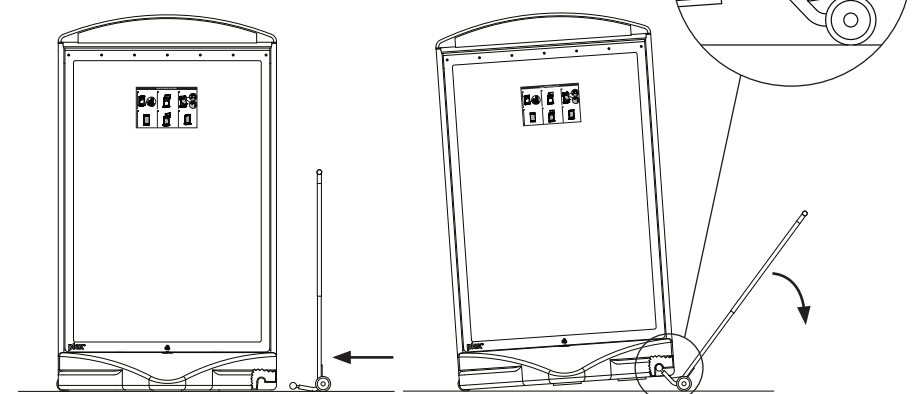
### FILLING WITH WATER



**N.B.** 5kg of refined salt is included inside base to prevent the water freezing.



### WHEELING INTO POSITION



**\*WHEN FULL, DO NOT MOVE WITHOUT TROLLEY**