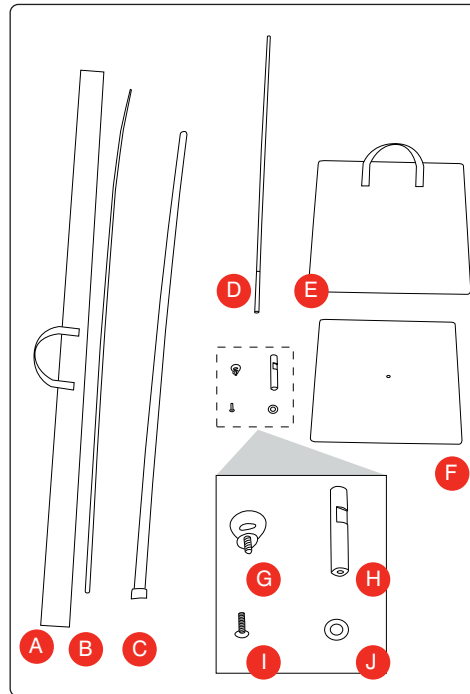
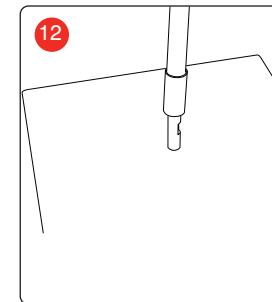
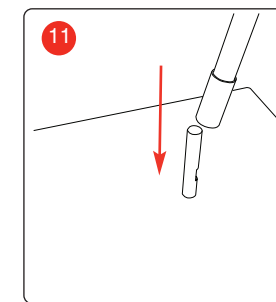
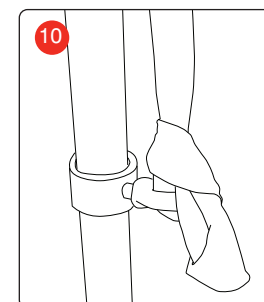
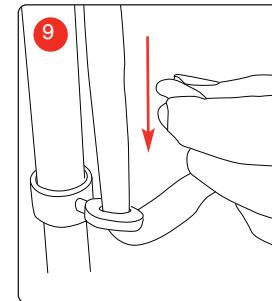
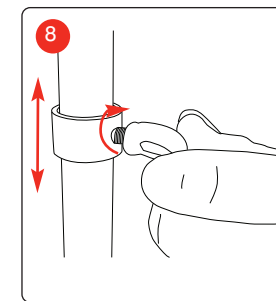
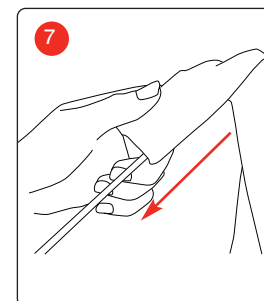
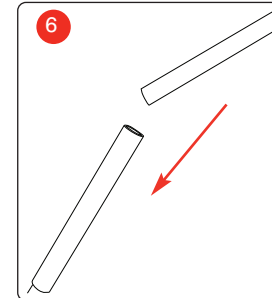
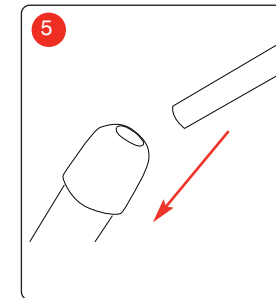
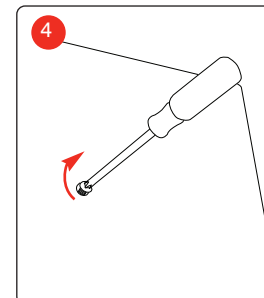
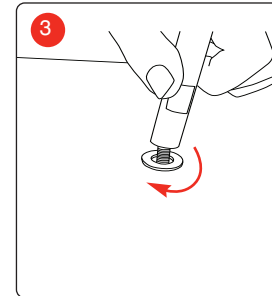
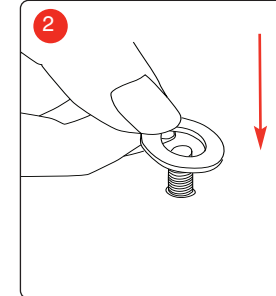
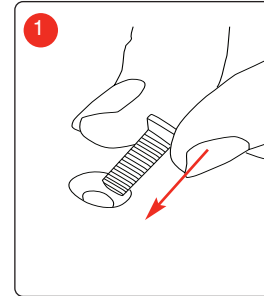




1800mm or 2500mm



- A) Pole bag B) Top pole section C) Base pole section
 - D) Flag extension (use for 2500mm)
 - E) Base bag F) Base G) Thumb screw
 - H) Base to pole fixing J) Base screw J) Washer
- * Screwdriver not included



Hardware specifications

Graphic specifications

Assembled dimensions:
 1800mm (h) using two poles.
 2500mm (h) using three poles.

Please refer to Graphic template