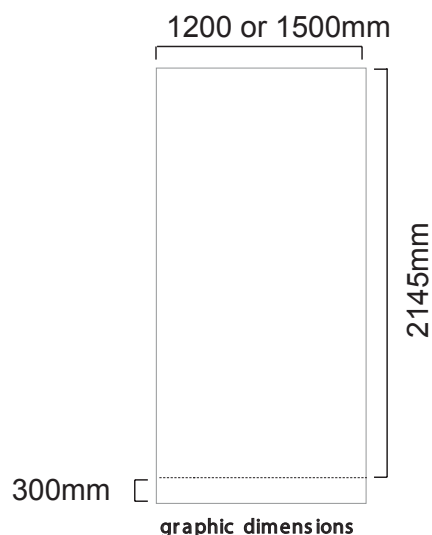




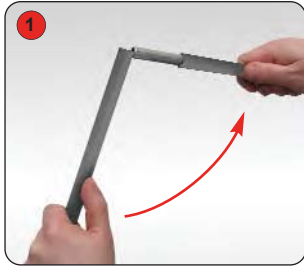
### Features and benefits

- Popular and versatile banner ideal for exhibition backdrops or showroom displays
- Single or Double sided options
- Large Graphic Area available in 2 widths - 1500mm or 1200mm
- Graphic area - 2145 x 1500/ 1200
- High Quality printed PVC graphic
- Available in Powder coated Silver finish
- Quick-change graphic release
- Quick-change Twista Plus snap rail
- Anodised silver bungee pole
- Supplied with carry bag



| Hardware specifications  | Graphic specifications   | Additional info   |
|--|--|---|
| <p><b>1200 Hardware dimensions (mm):</b></p> <p>2245 max (h) x 1218 (w) x 265 (d) approx.</p> <p><b>Base dimensions (mm):</b></p> <p>84 (h) x 1218 (w) x 265 (d) approx.</p> <p><b>Weight:</b></p> <p>11 kgs Single sided 1500mm<br/>9.8 kgs Single sided 1200mm<br/>15 kgs Double sided 1500mm<br/>13.8 kgs Double sided 1200mm</p> | <p><b>Visible Graphic Dimensions(mm):</b></p> <p>2145 (h) x 1200 or 1500(w)</p> <p><b>Substrate:</b></p> <p>Add 300mm (12")to base of graphic to allow for roller mechanism Reccomended material thickness 225 - 450 microns (8.86 - 17.72 Mils)</p> | <p><b>Included in kit:</b></p> <p>Base, top rail, bungee pole and carry bag</p> |

## Banner stand assembly



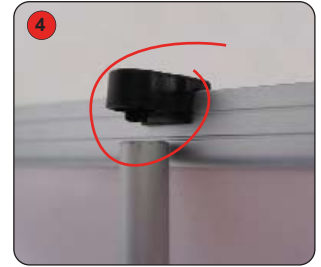
Open up the bungee pole until all 3 parts are fitted securely together.



Slot the pole into the hole on the base and push down to secure fit.



Pull graphic out of unit and tilt back to reach the top of the pole.



Fit pole into the top rail fixing.

**Important:** Hold the top rail whilst lowering the banner to prevent damage to the graphic. (do not drop)

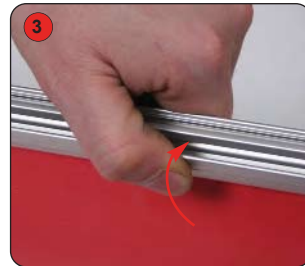
## Graphic attachment - Snap Rail



Open up snap rail as shown.

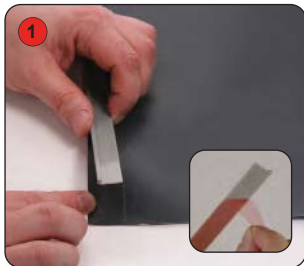


Slide the graphic through the end opening and move down until entire graphic edge is inserted.

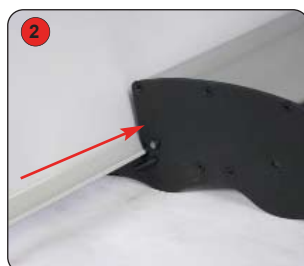


Close rail firmly onto graphic so it is fitted securely.

## Graphic attachment - Base



Adhere the insert to the **back** of the graphic.



Slide the insert and graphic into the base.



Whilst holding the graphic, remove the locking pin from the base and gently allow the graphic to retract.

**WARNING:** Always attach graphic to base and top rail before removing the locking pin.