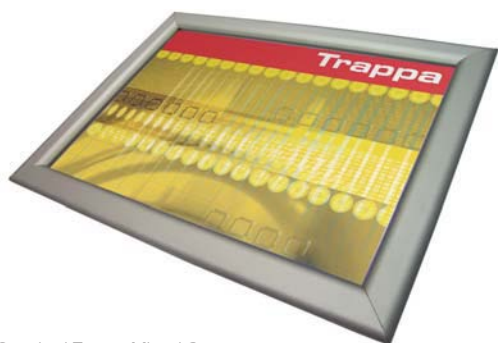


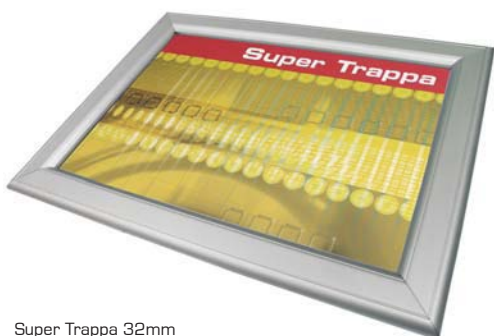
# Snap Shut Poster Frame



Standard Trappa Mitred Corner  
25mm Frame  
AT401 - AT408



Standard Trappa Moulded Corner  
25mm Frame  
AT401A - AT408A

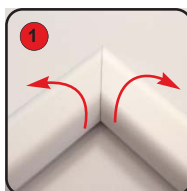


Super Trappa 32mm  
Frame (available in mitred corner only)  
AT551 - AT555

A range of stylish frames with snap action for quick and easy change of graphics.

## features & benefits

- Simple snap action poster frame with a choice of mitred or moulded plastic corners (Standard Trappa only)
- Moulded corners in black or grey
- Custom colours available to order
- Aluminium with anodised silver finish
- Wall mounted
- Suitable for substrates up to 1mm thick



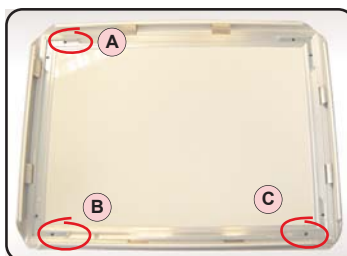
Open out the spring loaded frame sides and remove the clear protective sheets.



Place the graphic / poster into the frame recess.



Cover the graphic / poster with the clear protective sheet and close each spring loaded side.



To fix to the wall, locate the 3 holes on the frame underneath the edging. If a landscape format is required, use the two holes on the longer edge (B + C), or for portrait, use the holes opposite to each other (A + B).



Drill 2 holes into the wall and then screw into position. Follow steps 1 to 4 above to add graphic and secure. (Screw fixings not supplied)

Frame material: Aluminium / Clear protective sheet material: PVC

Frame colour: Silver (others available upon request) / Frame can be wall mounted in either portrait or landscape format.

Graphic or Poster size (mm)	Standard Trappa		Super Trappa	
	External frame size (mm)	Visible size (mm)	External frame size (mm)	Visible size (mm)
A0 [841 x 1189]	885 x 1233	831 x 1179	897 x 1245	833 x 1181
A1 [594 x 841]	638 x 885	584 x 831	650 x 897	586 x 833
A2 [420 x 594]	464 x 638	410 x 584	476 x 650	412 x 586
A3 [297 x 420]	341 x 464	287 x 410	353 x 476	289 x 412
A4 [210 x 297]	254 x 341	200 x 287	266 x 353	202 x 289
A5 [148.5 x 210]	192 x 254	138 x 200	204 x 266	140 x 202

**Standard Trappa** - Add 44mm to graphic or poster size to calculate external frame size ie 500 x 400 graphic = 544 x 444 external size. Deduct 10mm from graphic or poster size to calculate the visible size ie 500 x 400 graphic = 490 x 390 visible size.

**Super Trappa** - Add 56mm to graphic or poster size to calculate external frame size ie 500 x 400 graphic = 556 x 456 external size. Deduct 8mm from graphic or poster size to calculate the visible size ie 500 x 400 graphic = 492 x 392 visible size.