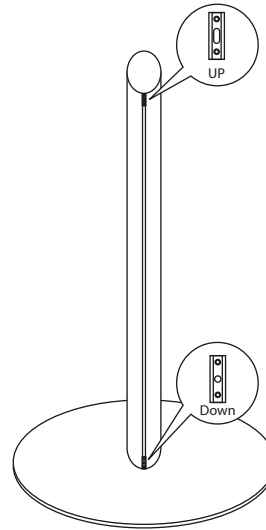
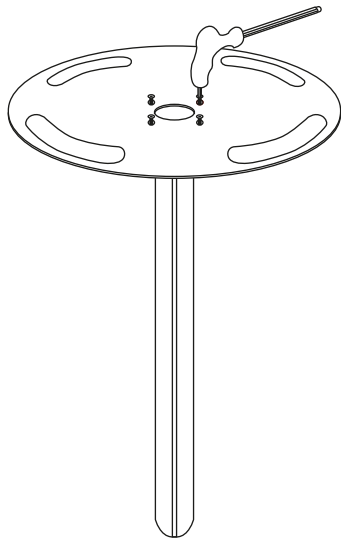


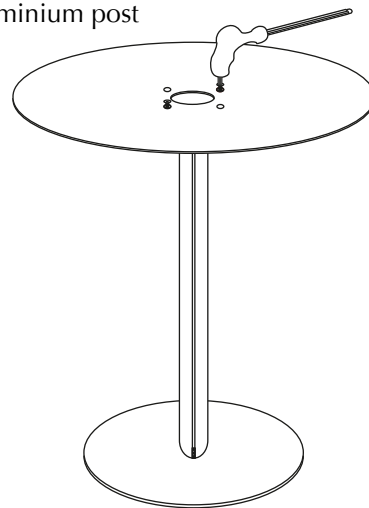
SETUP iPad STAND

(P.1)

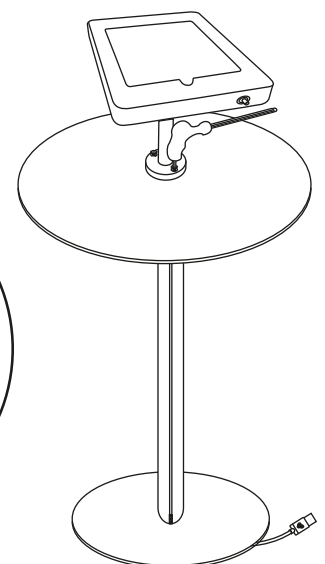
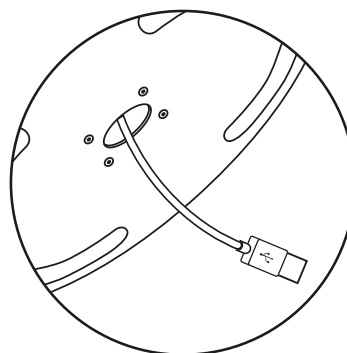
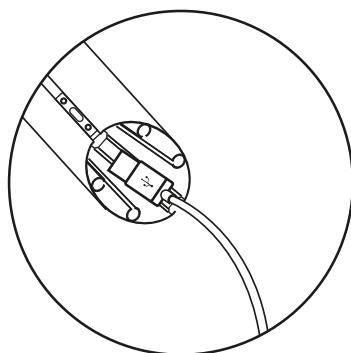
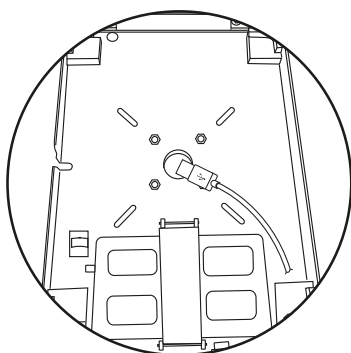
1. Connect the underside of the circular steel base to one end of the aluminium post



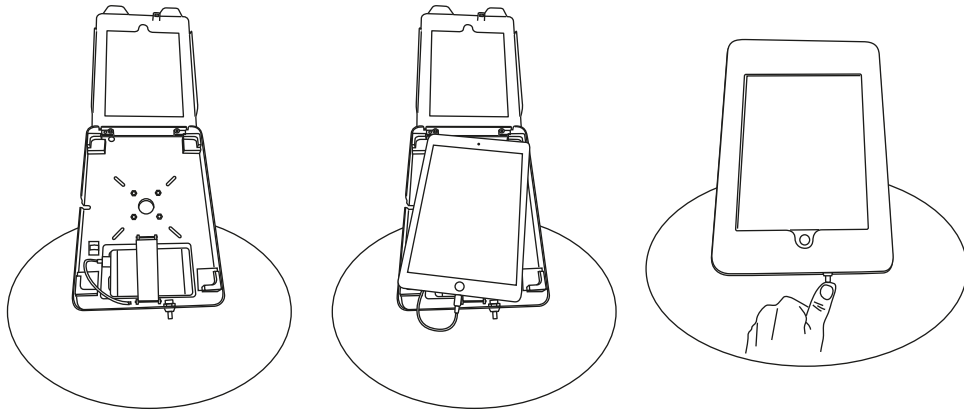
2. Connect the circular acrylic table to the other end of the aluminium post



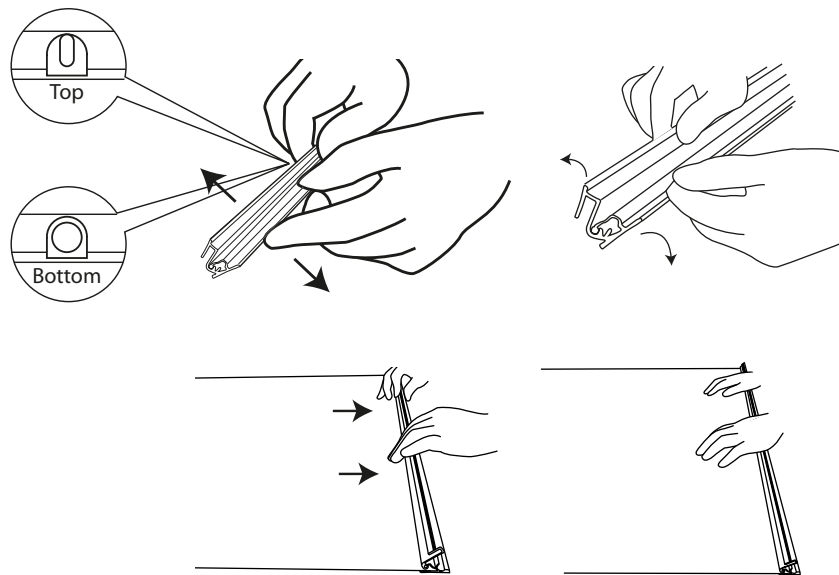
3. Unlock and open the fascia of the tablet enclosure, feed the power cable through the circular slot in the rear plate, then down through the aluminium post, until it appears on the underside of the floor base. Connect the tablet enclosure to the top of the aluminium post. Open the fascia of the tablet enclosure.



4. Open the fascia of the tablet enclosure. Attach the power cable to the tablet then carefully position it in the enclosure. Close the fascia and depress the lock button to securely lock the fascia.



5. Open the 2 snap style graphic rails, load the narrow ends of the graphic into each snap rail, then gently depress both snap rails.



6. The assembly is now complete.

