

Aluminium graphic frame ideal for displaying printable rigid infill substrates or mag taped graphics.



features & benefits

- Overall assembled size 2000mm (h) x 1400mm (w) x 400mm (d) approx
- Anodised aluminium construction
- Portable, easy assembly
- Available with round or oval profile post options
- Steel oval bases supplied as standard
- 450mm dia steel dome or thermoformed MDF base options also available
- Choice of two recommended graphic fixing options: Rigid infill or mag taped graphics
- Kits are supplied with 1 roll of adhesive backed steel tape enabling mag taped graphics to be easily displayed

Post options

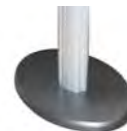


75mm round



75mm oval

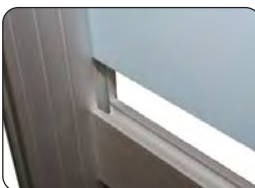
Base options

Steel oval
supplied as std
(weight 2kg approx)450mm dia Steel dome
extra cost option
(weight 7.5kg approx)Thermoformed MDF
extra cost option
(weight 0.5kg approx)

*Recommended
carry bag: LPB*

*Recommended
carry bag: LPB1*

Graphic fixing options



Rigid infill



Mag taped



hardware & graphic specifications

Hardware dimensions (mm):

2000 (h) x 1220 (w) x 400 (d)
approx

Weight:

13.5kg approx
(based upon Steel oval bases)

Recommended graphic substrates:

Rigid infill:

5mm thick foam board

Mag taped:

300micron polyester

Graphic dimensions (mm):

Rigid infill (1 panel):

1922 (h) x 772 (w) actual
1910 (h) x 760 (w) visible

Rigid infill (2 individual panels):

945 (h) x 772 (w) actual
933 (h) x 760 (w) visible

Mag taped graphic:

2000 (h) x 850 (w) actual
2000 (h) x 850 (w) visible

additional info

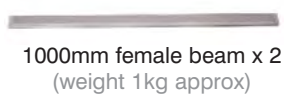
Recommended accessories:

LN112
Literature holderPS1000
200watt light
(see over for
fixing method)LN111
LCD Bracket

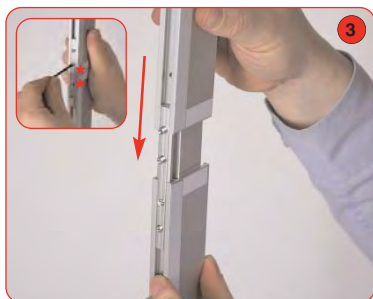
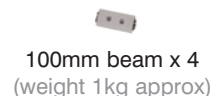
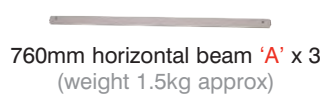
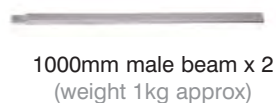
AC504 Wheeled carry case

Assembly Instructions

Linear Kit 4 includes:



1 x Roll of Steel tape
(use with Mag taped graphics)



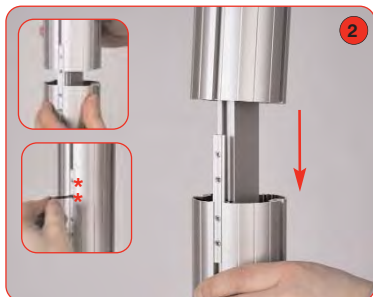
Attach 1000mm male beam to 1000mm female beam. Secure grub screws using a 2mm allen key. Repeat step for 2nd vertical side



Optional PS1000 lights (not supplied with the kit) can be fitted to the graphics rail using the **US-LINEAR** lighting bracket.



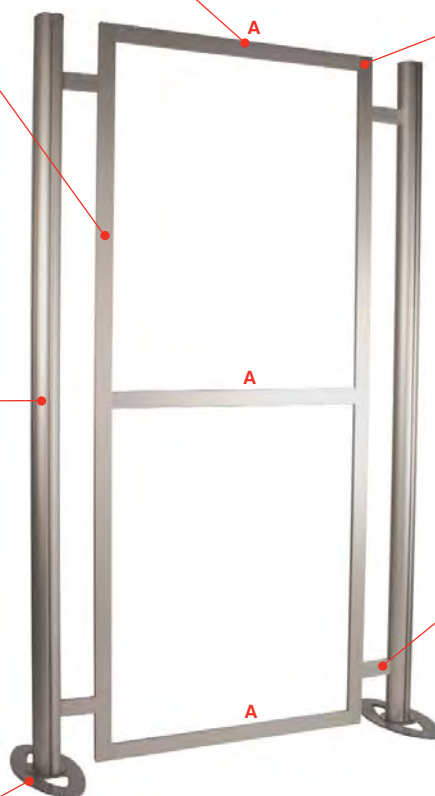
Attach horizontal beams to the vertical frame sides. Tighten locks using a 5mm allen key. If using rigid infill graphics, slide these in to position before tightening beams.



Align and slide female post over male post, tighten both grub screws using a 2mm allen key. Repeat step for 2nd post.



Attach base to male post using M10 bolt and allen key. Ensure clear washer is between base & post. Repeat step for 2nd post.



Attach assembled frame to vertical posts using 4 x 100mm beams. Tighten locks using a 5mm Allen key.

Notes:

1, Use suitable tin-snips to cut the steel tape to the required lengths

2, If applicable, ensure all applied steel tape is facing to the correct side during assembly.