

Aluminium graphic frame ideal for printable rigid infill substrates or mag taped graphics.



### features & benefits

- Overall assembled size 2000mm (h) x 2250mm (w) x 400mm (d) approx
- Anodised aluminium construction
- Portable, easy assembly
- Available with round or oval profile post options
- Steel oval bases supplied as standard
- 450mm dia steel dome or thermoformed MDF base options also available
- Choice of two recommended graphic fixing options: Rigid infill or mag taped graphics
- Kits are supplied with 1 roll of adhesive backed steel tape enabling mag taped graphics to be easily displayed

### Post options



75mm round



75mm oval

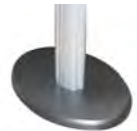
### Base options



Steel oval  
supplied as std  
(weight 2kg approx)



450mm dia Steel dome  
extra cost option  
(weight 7.5kg approx)

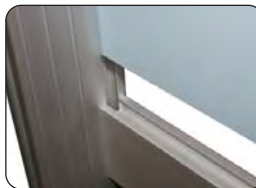


Thermoformed MDF  
extra cost option  
(weight 0.5kg approx)

Recommended  
carry bag: LPB

Recommended  
carry bag: LPB1

### Graphic fixing options



Rigid infill



Mag taped

### hardware & graphic specifications

#### Hardware dimensions (mm):

2000 (h) x 2250 (w) x 400 (d)  
approx

#### Weight:

17kg approx  
(based upon Steel oval bases)

#### Recommended graphic substrates:

Rigid infill:  
5mm thick foam board

Mag taped:  
300micron polyester

#### Graphic dimensions (mm):

##### Rigid infill (2 individual panels):

1922 (h) x 795 (w) actual  
1910 (h) x 783 (w) visible

##### Rigid infill (4 individual panels):

945 (h) x 795 (w) actual  
933 (h) x 783 (w) visible

##### Mag taped graphic (2 panels):

2000 (h) x 850 (w) actual  
2000 (h) x 850 (w) visible

### additional info

#### Recommended accessories:



LN112  
Literature holder



PS1000  
200watt light  
(see over for  
fixing method)



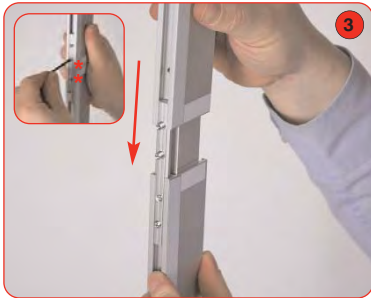
LN111  
LCD Bracket



AC504 Wheeled carry case

# Assembly Instructions

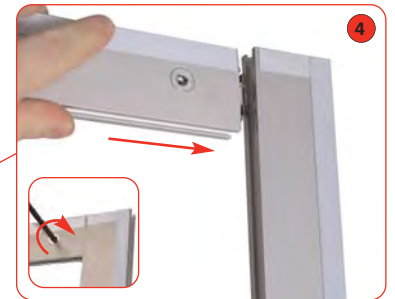
## Linear Kit 5 includes:



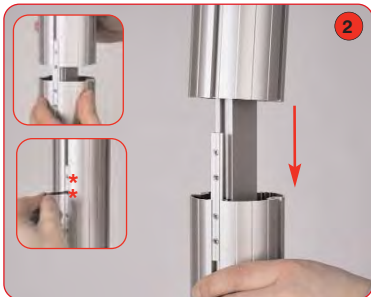
Attach 1000mm male beam to 1000mm female beam. Secure grub screws using a 2mm allen key. Repeat step for remaining vertical beams.



Optional PS1000 lights (not supplied with the kit) can be fitted to the graphics rail using the **US-LINEAR** lighting bracket.



Attach horizontal beams to the vertical frame sides. Tighten locks using a 5mm allen key. If using rigid infill graphics, slide these in to position before tightening beams.



Align and slide female post over male post, tighten both grub screws using a 2mm allen key. Repeat step for 2nd post.



Attach assembled frame to vertical posts using 4 x 150mm twinspan beams. Tighten locks using a 5mm Allen key.

### Notes:

1, Use suitable tin-snips to cut the steel tape to the required lengths

2, If applicable, ensure all applied steel tape is facing to the correct side during assembly.



Attach base to male post using M10 bolt and allen key. Ensure clear washer is between base & post. Repeat step for 2nd post.



Attach adjustable foot to bottom horizontal rail.