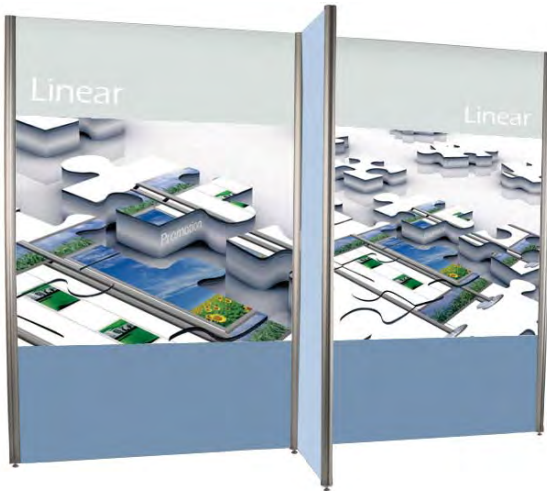
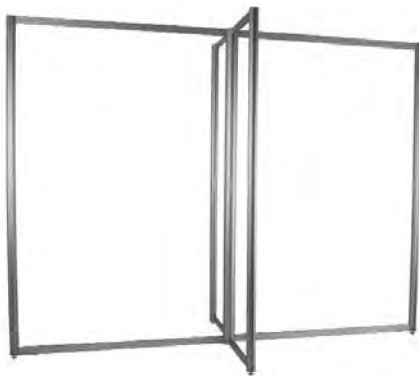


Aluminium graphic frame ideal for looped fabric, rigid infill substrates and fabric spring clip fixed graphics

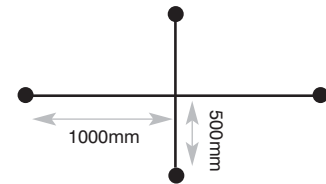


features & benefits

- Overall assembled size 2000mm (h) x 2300mm (w) x 1300mm (d) approx
- Anodised aluminium construction
- Portable, easy assembly
- Available with one round 75mm dia central post and four 50mm dia outer posts
- Adjustable feet supplied as standard
- 450mm dia steel dome or thermoformed MDF base options also available
- Choice of 3 recommended graphic fixing options: Rigid infill, Looped fabric or Spring clip fixed graphics

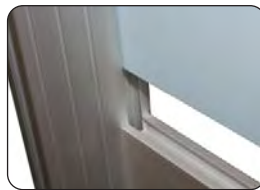


Adjustable foot



Plan view
(dimensions are approx.)

Graphic fixing options



Rigid infill



Looped fabric



Spring clip

hardware & graphic specifications

Hardware dimensions (mm):
2000 (h) x 2300 (w) x 1300 (d)
approx

Weight:
15.75kg approx

Recommended graphic substrates:

Rigid infill:
5mm thick foam board

Looped fabric or Spring clip:
105 to 205gsm Lightweight fabric

Visible graphic dimensions (mm):

Rigid infill:
2 at 1932 (h) x 1012 (w) actual
1920 (h) x 1000 (w) visible
2 at 1932 (h) x 512 (w) actual
1920 (h) x 500 (w) visible

Looped fabric:
2 at 2000 (h) x 1000 (w) visible
2 at 2000 (h) x 500 (w) visible
both sizes include a 160mm double
hemmed loop at top and bottom of graphic

Spring clip:
2 at 1750 (h) x 1000 (w) visible
2 at 1750 (h) x 500 (w) visible
both sizes include a 50mm hemmed loop
at top and bottom of graphic

additional info

Recommended accessories:



LN112
Literature holder



LN111
LCD Bracket



AC504 Wheeled carry case
(Linear kit 8 requires 2 cases)



PS1000
200watt light
(see over for
fixing method)

Linear Kit 8 includes:

75mm dia male post x 1
(weight 1.25kg approx)

50mm dia male post x 4
(weight 5kg approx)

1000mm horizontal beam 'A' x 4
(weight 2kg approx)

Adjustable foot x 5
(weight 0.25kg approx)

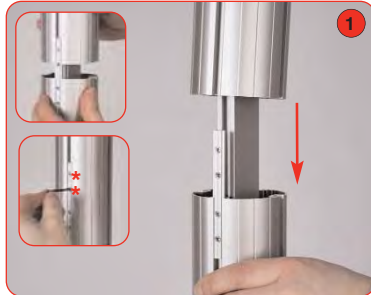
75mm dia female post x 1
(weight 1.25kg approx)

50mm dia female post x 4
(weight 5kg approx)

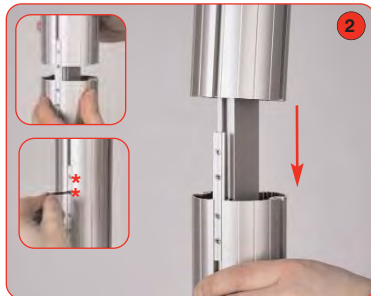
500mm horizontal beam 'B' x 4
(weight 1kg approx)



Allen key set



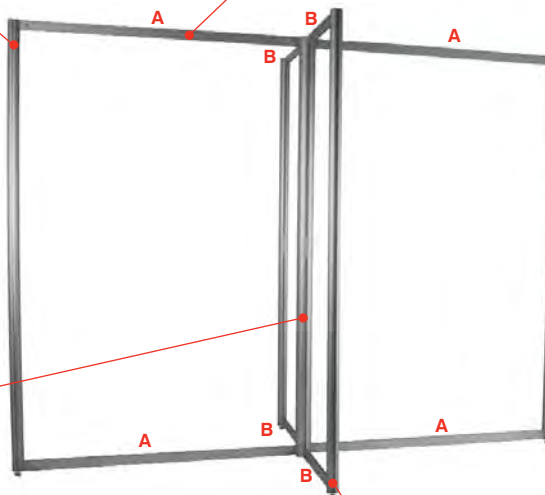
Align and slide 50mm dia female post over 50mm dia male post, tighten both grub screws using a 2mm allen key. Repeat step for remaining 50mm dia posts.



Align and slide 75mm dia female post over 75mm dia male post, tighten both grub screws using a 2mm allen key.



Optional PS1000 lights (not supplied with the kit) can be fitted to the graphics rail using LNB lighting bracket



Attach horizontal beams to vertical posts. Tighten locks using a 5mm allen key. If using rigid infill or looped fabric graphics, slide these in to position before tightening beams.

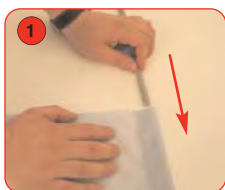


Attach adjustable foot to post. Repeat step for remaining posts.

Optional Spring Clip assembly



Kit 8 requires: 38 x Spring clips, 4 off 500mm wide GRP rods & 4 off 1000mm wide GRP rods (nb parts are not supplied with the kit)



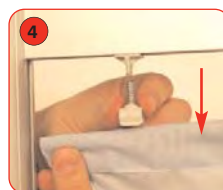
Slide GRP rod into the hemmed fabric.



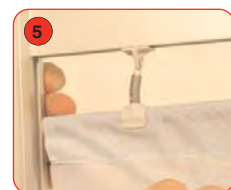
Place spring clip into channel of beam.



Twist the spring clip to secure to the beam.



Attach the spring clip to the GRP/fabric graphic.



Repeat steps for remaining spring clips.